



New products 2025





## Index

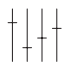
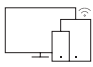
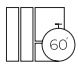

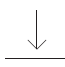
AUDAC Touch™	<i>Simplified design, management &amp; system control platform</i>	4
NIO series	<i>Network I/O mixing breakout boxes</i>	10
VEXO1xx series	<i>High performance 2-way loudspeakers</i>	12
VEXO208I	<i>Compact 8" high performance 3-way loudspeakers</i>	15
BASSO series	<i>Ultra-high power infra subwoofers</i>	180
ARCHI series	<i>Compact architectural subwoofers</i>	184

# AUDAC Touch™

## Simplified design, management & system control platform

AUDAC strongly believes in out-of-your-pocket controllable audio solutions and further establishes its progressive position by developing the AUDAC Touch™ simplified design & system control platform. Using this freely available solution, application-specific dashboards can be created and customized, allowing the control of multiple devices from one single application.

Visit [audac.eu/touch](http://audac.eu/touch) for more information.

-  Total system control
-  Automatic device discovery
-  Custom dashboards
-  Premium functionalities on demand
-  Freely downloadable



### Technology partners

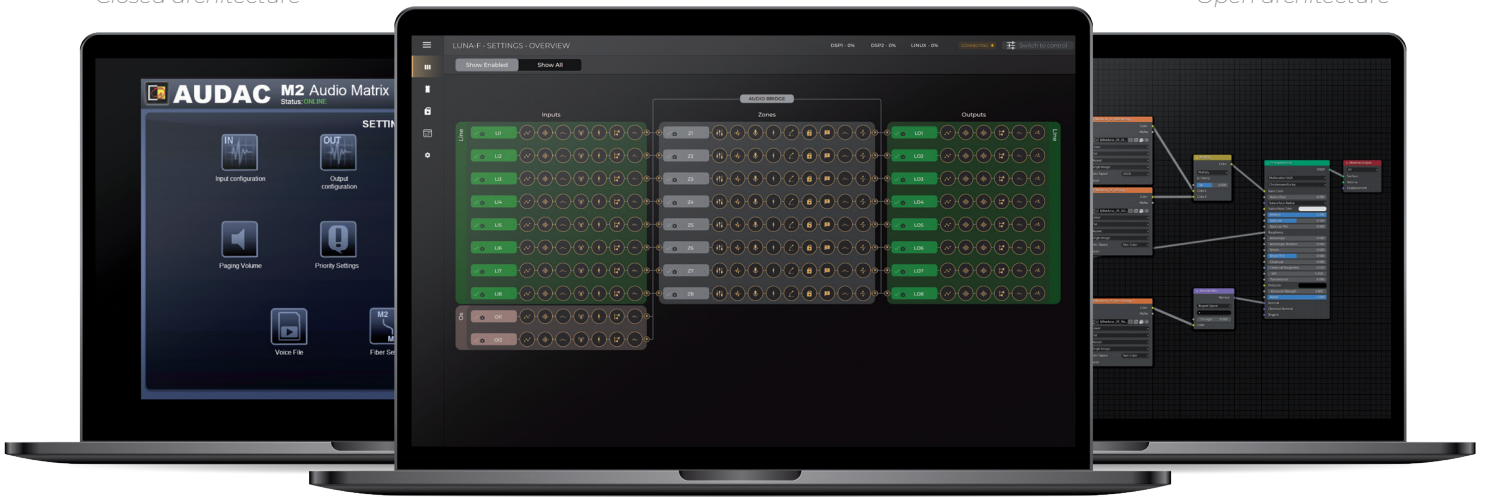
At AUDAC, we are committed to providing our customers with the best possible products and services. To do this, we work with a variety of technology partners to access a wider range of expertise and capabilities.



\* Note that your national legislation may be different for your territory, check the website for more information.

Closed architecture

Open architecture



Empowering efficiency with intuitive control

## Flexible architecture

In today's fast-paced world, the ability to quickly and efficiently manage AV equipment is more important than ever before. Therefore, we want to evolve from a closed architecture, not to a completely open one, but to a flexible settings panel. Predefined settings & routing in a fully customisable and controllable view.



☆ Image widget

☆ Clock widget

Commander function

Output widget

☆ Open dashboard widget

☆ Premium feature



User-friendly control dashboards

## For end users

Imagine full control over your AV system from the palm of your hand. A user-friendly interface allows you to quickly switch between audio sources and adjust the volume to create the perfect atmosphere for any occasion.

Whether you're in a restaurant, hotel, or conference center, AUDAC Touch™ makes it easy to manage not only your audio system, but also third-party devices like beamers, lights or every device that is controllable over the network.

- ✓ Intuitive full system overview
- ✓ Easy controllability of your entire installation
- ✓ Non-AUDAC products control (third-party support)
- ✓ Licensed streaming (Spotify™ and Soundtrack Your Brand©)



Design, management & control

## For integrators

As an integrator, you know that the success of any audio installation depends on your ability to control and manage the system with ease and precision. That's where AUDAC Touch™ comes in, offering intuitive control over AUDAC solutions and third-party equipment.

Easily design, manage & control your entire AV installation, and fine-tune the equalizer settings to achieve the perfect sound reproduction in all kinds of applications. Set up dashboards in minutes, no complex programming skills needed!

- Smart widgets ✓
- Live audio control & processing technology ✓
- Over-the-air updates ✓
- No programming skills needed ✓
- LUA scripting ✓
- AUDAC Touch™ emulator ✓



# Premium license

## Enhance your AUDAC Touch™ experience

A variety of premium features that will enhance your experience and take your AUDAC Touch™ usage to the next level. While our free version provides a fantastic foundation, upgrading to premium gives you access to advanced features that will help you get the most out of our platform.

### What is included with AUDAC Touch™ plus?

Clock widget	✓
Play mode button	✓
Fade volume button	✓
Custom image widget	✓
Input button	✓
Mute multiple outputs	✓
Open dashboard widget	✓
Play voice file	✓
Advanced text	✓





# What's new in AUDAC Touch™ Version update 2.12

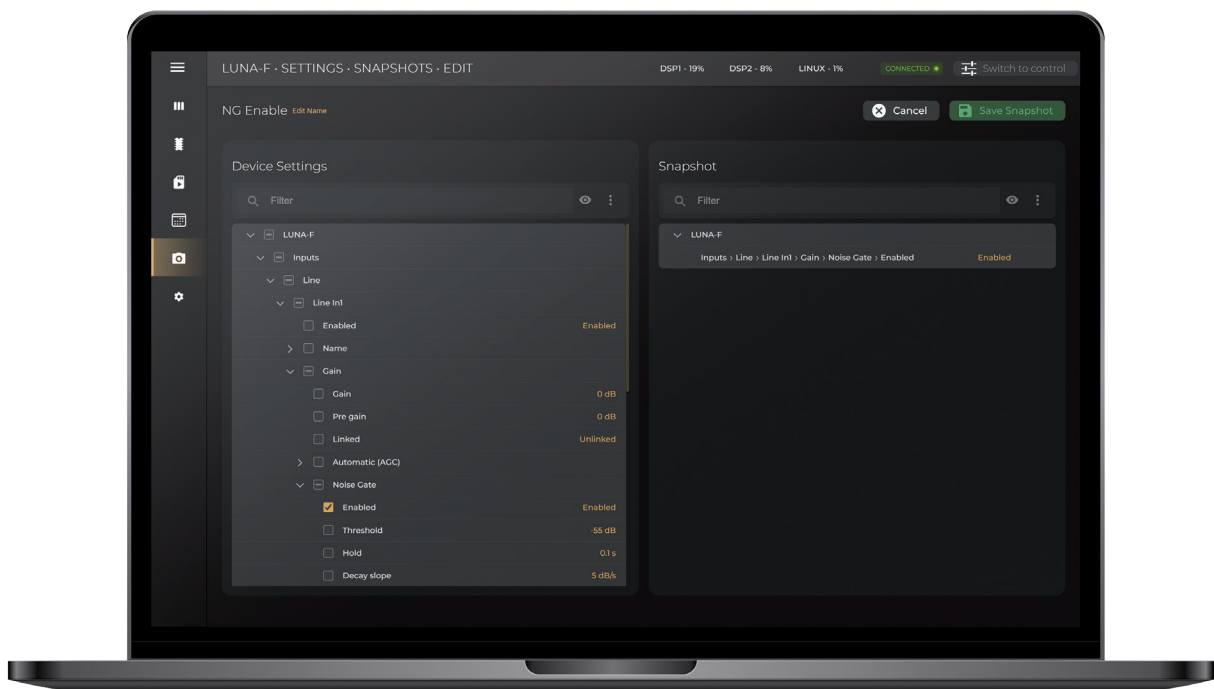
At AUDAC, innovation is at the core of everything we do, and AUDAC Touch™ is no exception. What sets AUDAC Touch™ apart is its commitment to continuous evolution, ensuring that you always benefit from the latest features and enhancements.

Our dedicated development team works tirelessly to stay ahead of industry trends and user demands. Regular updates are rolled out seamlessly, introducing cutting-edge functionalities, improved performance, and expanded compatibility with both AUDAC devices and third-party solutions.

- ✓ Snapshots on LUNA series
- ✓ VU on gain slider widgets
- ✓ Exclude periods for an event
- ✓ Events triggered by contacts can be used without time server
- ✓ Extra commands available in events
- ✓ Label widgets showing live values
- ✓ WaveTune™ setting on NWP Dante™ inputs
- ✓ TouchLink Priority based paging support with TouchLink™ zone selection
- ✓ Bluetooth PIN & disable on NWP series
- ✓ Connection status on dashboard widgets
- ✓ Overall performance improvements

## Snapshots, simplify your audio management

A game-changer for dynamic environments like bars, restaurants or multipurpose rooms. With Snapshots, you can effortlessly save and recall multiple processing configurations, adapting your sound system to match the mood and requirements of any occasion.







## Future release timeline

# Emerging features on the horizon

Exciting updates await in the future of the AUDAC Atellio family! Brace yourself for an immersive audio adventure powered by cutting-edge features. Seamlessly connect with diverse devices through enhanced connectivity options, ensuring a versatile and hassle-free user experience.

Scan the QR code below to discover all new & upcoming features.



## Simplified design, management & system control platform

At the heart of it all, you can find AUDAC Touch™, our total system control platform. With AUDAC Touch™, we offer the easiest way to set up a system and create custom user dashboards without even needing a single line of code. By dragging and dropping widgets, a dashboard can be made in a flick of a wrist without complex configuration.



# NIO series

Network I/O mixing breakout boxes



## NIO204

Network I/O mixing breakout box - 4 x Mic/Line outputs

## NIO222

Network I/O mixing breakout box - 2 x Mic/Line inputs + 2 x Balanced Line outputs



## NIO240

Network I/O mixing breakout box - 4 x Mic/Line inputs

- ✓ All-in-one mixing & sound processing
- ✓ All-in-one free design & control platform - AUDAC Touch™
- ✓ Flexible & scalable software architecture
- ✓ Quick to learn, fast to deploy
- ✓ Integrated Bluetooth receiver (Version 4.2)
- ✓ 4 x 4 channels Dante™ & AES67
- ✓ Superior sound quality & low latency
- ✓ Various physical input and output options
- ✓ S-box™ modular multifunctional enclosure

NIO series are Dante™/AES67 Network I/O mixing breakout boxes featuring terminal block input and output audio and Bluetooth connections (Antenna incl. & extendable with optional BAE100 extension kit - see page 3). The audio inputs can be switched between line-level and microphone-level audio signals and phantom power (+48 V DC) can be applied to the input connectors for powering condenser microphones.

Various further integrated DSP functions such as EQ, automatic gain control, and other device settings can be configured through the AUDAC Touch™. The IP-based communication makes it future-proof while also being backwards compatible with many existing products.



All-in-one mixing & sound processing



Bluetooth



USB



PoE

Dante™

	Mic Input	Line input	Balanced line output	Bluetooth	Phantom power	Connections	Power consump.	Dimensions (W x H)	Compatible installation bracket
NIO204	No	No	Yes	Yes (4.2)	Yes (48V DC)	Terminal block & RJ45	3.59W	108 x 44 x 165 mm	MBS1xx series
NIO222	Yes	Yes	Yes	Yes (4.2)	Yes (48V DC)	Terminal block & RJ45	3.75W	108 x 44 x 165 mm	
NIO240	Yes	Yes	No	Yes (4.2)	Yes (48V DC)	Terminal block & RJ45	3.54W	108 x 44 x 165 mm	



## All-in-one mixing & sound processing

Instead of processing on the receiving side we designed the NWP series so that you will put the signal right on your network once by processing on the side where it still matters.



## Quick to learn, fast to deploy

The IP-based communication makes it future-proof while also being backwards compatible with many existing products. In contrast, the limited PoE power consumption makes it compatible with any PoE network-based installation.



## 4x4 Dante™/AES67 I/O

These Dante™/AES67 networked audio input panels can be used to transmit audio signals in a Dante™ audio network. In addition to Bluetooth connection in all models, different physical connection options are available such as XLR, 3.5mm jack inputs, and USB Type-C.



# VEXO1xx series

## High performance 2-way loudspeakers

The VEXO1xx series are compact high performance 2-way loudspeakers and come in 5 different (active or passive) models. The low-frequency transducer, which is made out of high-quality materials, is combined with a 1.4 (VEXO106 & VEXO108) or 1.7" (VEXO110, VEXO112 & VEXO115) voice coil compression driver, enabling high sound pressure levels and a tight driver response with a rotatable 90° x 70° coverage pattern for a wide range of applications.

Ω 8 Ohm | ⚡ 70-100 Volt



### VEXO106

6" high performance 2-way loudspeaker

*[No active version or carry handle]*



### VEXO108

8" high performance 2-way loudspeaker

*[No active version or carry handle]*



### VEXO110(A)

10" high performance  
2-way (active) loudspeaker



### VEXO112(A)

12" high performance 2-way  
(active) loudspeaker



### VEXO115(A)

15" high performance 2-way  
(active) loudspeaker

## Mounting made easy

A possible inclination of -90° to +35° ensures optimal positioning of the speakers. It is even possible to mount the VEXO1xx series to the ceiling which allows installing the loudspeaker cleanly in any environment. The cabinet is also fitted with a 35 mm pole adapter and ample rigging points.

Optional cover bag: **CPVX110**

Two-way revolving mounting bracket

VEXO108: **MBK500**

*Optional MBK11xV  
Clever U-bracket*



## A complete range

Versatile 2-way loudspeakers in 5 models, boasting superior components for high sound levels, tight response, and flexible coverage, perfect for diverse applications.



## Empowering clarity

This aspiration has inspired us to design a high performance 2-way loudspeaker that provides exceptional accuracy and clarity coming from this refined enclosure.

## Optional 100V transformer

By removing the backplate with two slanted Speakon connectors and replacing it with a 70/100V backplate on which the module is integrated, the high-performance loudspeaker is able to be implemented in 70/100V systems.

- TRM012 | 70/100V transformer module VEXO106 & VEXO108 - 120W
- TRM124 | 70/100V transformer module VEXO110 - 240 & 120W
- TRM224 | 70/100V transformer module VEXO112 & VEXO115 - 240 & 120W
- TRM248 | 70/100V transformer module VEXO112 & VEXO115 - 480 & 240W



	Max/peak power	Program power	Continuous power (AES)	Max SPL (Continuous)	Sensitivity 1W/1m	Dispersion (Rotatable)	Impedance / Transformer (Opt. 70-100V)	Freq response +- 3 dB	Dimensions	Weight
VEXO106	500W	250W	125W	113 dB	92 dB	90° x 100° (Not rotatable)	8 Ω / Yes	80 Hz - 20 kHz	196 x 355 x 205 mm	7.2 kg
VEXO108	800W	400W	200W	118 dB	95 dB	90° x 70°	8 Ω / Yes	70 Hz - 20 kHz	244 x 425 x 256 mm	9.4 kg
VEXO110	1200W	600W	300W	121 dB	96 dB	90° x 70°	8 Ω / Yes	65 Hz - 20 kHz	329 x 540 x 345 mm	16.8 kg
VEXO110A	1200W	450W	300W	121 dB	96 dB	90° x 70°	8 Ω / No	65 Hz - 20 kHz	329 x 540 x 345 mm	18 kg
VEXO112	1600W	800W	400W	125 dB	99 dB	90° x 70°	8 Ω / Yes	58 Hz - 20 kHz	369 x 610 x 390 mm	22.4 kg
VEXO112A	1600W	600W	400W	125 dB	99 dB	90° x 70°	8 Ω / No	58 Hz - 20 kHz	369 x 610 x 390 mm	23.5 kg
VEXO115	2000W	1000W	500W	127 dB	100 dB	90° x 70°	8 Ω / Yes	50 Hz - 20 kHz	429 x 690 x 450 mm	28.1 kg
VEXO115A	2000W	750W	500W	127 dB	100 dB	90° x 70°	8 Ω / No	50 Hz - 20 kHz	429 x 690 x 450 mm	28.3 kg

# VEXO208I

Compact 8" high performance 3-way loudspeakers



The VEXO208 is a high-output 3-way loudspeaker, providing a powerful and detailed signature sound of the VEXO family with a dual 8-inch driver in a compact cabinet.

The combination of the elegant enclosure and high performance allows them to be used in installation applications that require both a modern look and a unique audio experience from nightclubs to sports facilities. Compression driver overload protection is provided through an internal limiting circuit. Mounting in both horizontal and vertical directions is possible with the included wall bracket. An optional 70/100V transformer module can be installed to use VEXO208 in Hi-Z systems.

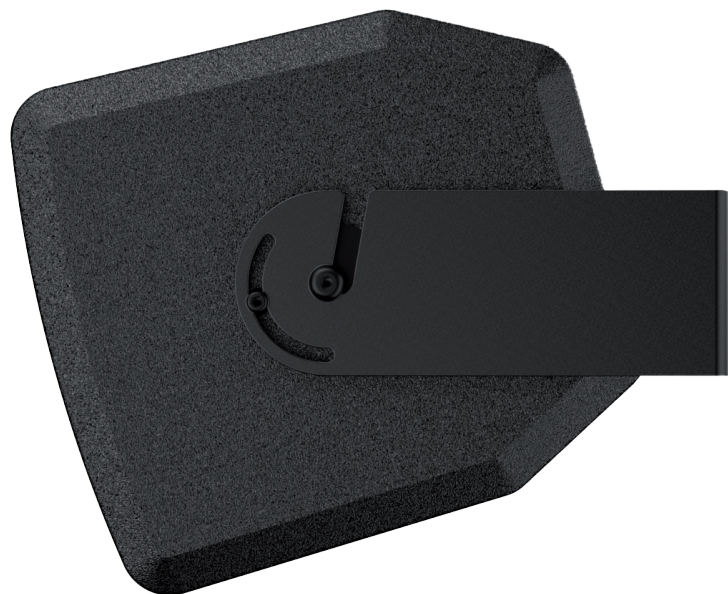
$\Omega$  4 Ohm | ⚡ 70-100 Volt



*Clever U-bracket*

## Included mounting accessories

Equipped with essential mounting accessories, featuring the clever U-bracket for flexible installation and a drop safety wire for added security. These included components ensure a hassle-free and secure mounting experience, enhancing the versatility of the VEXO208.





## Connectivity made easy

By removing the backplate with two slanted Speakon connectors and replacing it with a 70/100V backplate on which the module is integrated, the high-performance loudspeaker is able to be implemented in 70/100V systems.

## Powerful and detailed sound signature

Experience unparalleled audio excellence. These 3-way loudspeakers deliver an immersive auditory experience. Precision engineering and advanced technology harmonize to produce rich, dynamic sound, setting a new standard in audio performance.



## What's new with the VEXO208I?

The VEXO208I brings enhanced versatility with an integrated polemount adapter and an 8-ohm version, ensuring improved compatibility and exceptional sound performance for various applications.



*35 mm pole mount adapter  
(optional CHB196)*



*8 Ohm version*

	Max/peak power	Program power	Continuous power (AES)	Max SPL (Continuous)	Sensitivity 1W / 1 m	Impedance / Transformer (Optionally 70-100V)	Freq response +/- 3 dB	Dimensions	Weight
VEXO208I	1600W	800W	400W	120 dB	94 dB	4 Ω / Yes	75 Hz - 20 kHz	710 x 260 x 290 mm	17 kg
VEXO208DI	1600W	800W	400W	120 dB	94 dB	8 Ω / Yes	75 Hz - 20 kHz	710 x 260 x 290 mm	17 kg

# BASSO series

## Ultra-high power infra subwoofers

Engineered for demanding environments such as nightclubs, concert venues, theme parks, and hospitality spaces, the BASSO Series combines cutting-edge technologies like the pure carbon fiber cone and AeroVent for exponential low-noise venting with meticulous craftsmanship to set a new standard in low-frequency fidelity.

With a focus on ultra-high power output and exceptional sound clarity, the BASSO Series offers a flexible, efficient solution for diverse applications. Each model is designed to deliver a visceral sound experience with immersive infra-sub performance and extremely low distortion.



### BASSO112

12" ultra-high power infra-subwoofer

Available in outdoor version: [BASSO112/BO](#)

- ✓ Precision with immersive infra-sub performance
- ✓ Custom high-excursion driver
- ✓ Extremely low distortion
- ✓ Engineered for efficiency and ultra-high power outputs
- ✓ AeroVent- Exp. low noise vent design
- ✓ Weatherproof pure carbon fiber cone



### BASSO115

15" ultra-high power infra-subwoofer

Available in outdoor version: [BASSO115/BO](#)



### BASSO118

18" ultra-high power infra-subwoofer

Available in outdoor version: [BASSO118/BO](#)

 Weatherproof

	Program power	Continuous power (AES)	Max SPL (Continuous)	Sensitivity 1W/1m	Freq response -10 dB	Dimensions
<a href="#">BASSO112</a>	2000W	1000W	124 dB	94 dB	26 Hz - 200 Hz	608 x 371x 595 mm
<a href="#">BASSO115</a>	3000W	1500W	127 dB	98 dB	31 Hz - 200 Hz	688 x 451 x 703 mm
<a href="#">BASSO118</a>	3000W	1500W	128 dB	99 dB	23 Hz - 200 Hz	758 x 555 x 798 mm



## Sounds that Surrounds, Bass that Grounds You

Experience the ultimate bass experience, low-frequency extension down to 23Hz, a maximum SPL of 128 dB, and 3000-watt program power.

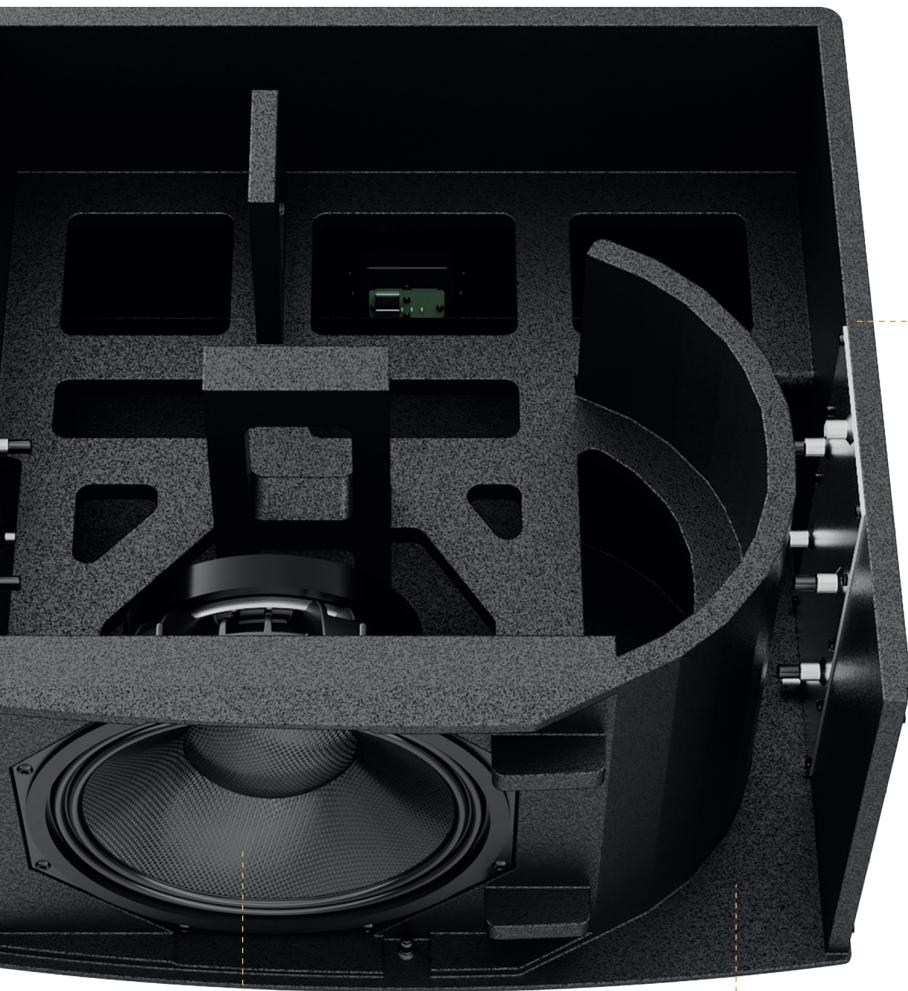
Each model features a robust chassis and inner framing, ensuring long-term durability and sound integrity.



## All-weather resistant, extreme durability

Built for the toughest conditions, the outdoor BASSO series combines a pure carbon fiber cone with enhanced durability features: marine-grade plywood, phenolic glue, Dura-Polyurea coating, stainless steel fasteners, and a galvanized-treated grill. Delivering powerful bass, they thrive in any environment, indoors or out.





## Crafted for unmatched performance

Every detail of the BASSO cabinet is engineered for durability and acoustical precision, ensuring consistent performance and exceptional sound clarity in the most demanding environments.

## Power redefined with AeroVent

AeroVent's revolutionary design minimizes distortion and maximizes output, delivering consistent low-frequency performance - from subtle nuances at 1W to powerful bass at 1KW.

## Pure Carbon Fiber cone

Unleash deep, precise bass with the pure carbon fiber cone. Lightweight, weatherproof, and durable, it ensures exceptional performance and clarity, even in the harshest conditions.





A brief overview

# Compare the BASSO with BASO

Explore the evolution of bass performance with the new BASSO series. Featuring AeroVent technology, unmatched infrasub capabilities, and redefined power, it surpasses the old BASO lineup in every aspect, delivering deeper, richer bass and exceptional precision.

	BASO series	BASSO series
Configuration	Bass reflex	AeroVent
Available models	10", 12", 15", 18"	12", 15", 18"
Weather resistant	-	✓
IP rating	-	TBA
Salt spray testing	-	TBA
Lowest low frequency extension (-10 dB)	30Hz*	23 Hz*
Max SPL (Continuous)	127dB**	128dB**
Cone Material	Special treated composite paper	Pure Carbon Fiber

\*BASO18 and BASSO18  
\*\*BASO15 and BASSO18



## Future-proof your next project

The new infra-sub series sets a groundbreaking standard in bass performance. Designed for consumers and installers alike, it ensures unmatched sound quality and reliability, making it the ultimate solution for all high-performance audio projects now and into the future.

# ARCHI series

## Compact architectural subwoofers

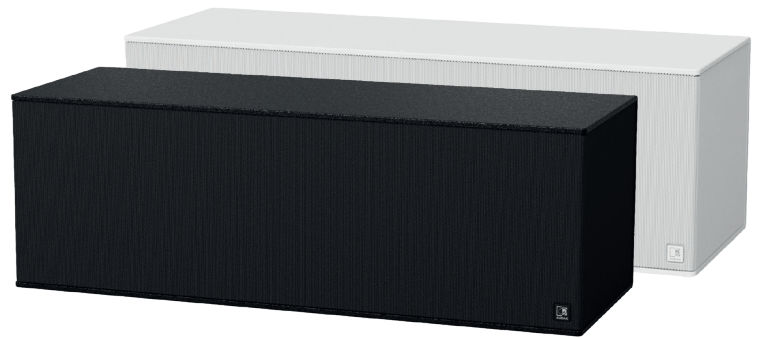
The ARCHI Series combines architectural elegance with groundbreaking audio performance. Designed for bars, restaurants, hospitality, and residential applications, these compact subwoofers deliver immersive sound with minimal visual impact.

Featuring innovations like AcoustiMesh for acoustic neutrality, AeroVent for noise-free bass performance, and weatherproof capabilities, the ARCHI Series excels indoors and outdoors. With low-frequency extensions down to 26Hz, flexible mounting options, and durable materials, the ARCHI Series redefines low-frequency fidelity, offering powerful, precise bass in a discreet, stylish design.



### ARCHI10

Compact 10" architectural subwoofer



### ARCHI210


Compact double 10" architectural subwoofer

- ✓ Architecturally discreet & compact design
- ✓ Immersive sound experience
- ✓ Custom 10" high-excursion drivers for superior performance
- ✓ Low frequency extension down to 26 Hz
- ✓ AcoustiMesh - Acoustic neutral 3D fabric
- ✓ Flexible ceiling & wall mount option
- ✓ Extremely ridged chassis and inner framing
- ✓ Weatherproof model (ARCHI10X/OB)



### ARCHI10X

(Outdoor) ultra-compact 10" architectural infra-subwoofer

Ω 4 Ohm | Ω 8 Ohm | Ω 16 Ohm |  Weatherproof (ARCHI10X/OB)



	Program power	Continuous power (AES)	Max SPL (Continuous)	Sensitivity 1W / 1 m	Impedance (Nominal)	Freq response - 10 dB	Dimensions
ARCHI10	450W	225W	122 dB	98 dB	8Ω	54 Hz - 200 Hz	405 x 312 x 334 mm
ARCHI210	900W	450W	128 dB	101 dB	4Ω / 16Ω	47 Hz - 200 Hz	868 x 302 x 318 mm
ARCHI10X	700W	350W	116 dB	91 dB	8Ω	26 Hz - 120 Hz	540 x 246 x 558 mm

## Redefining bass performance

The ARCHI210 features an innovative push-pull design, eliminating second harmonic distortion for cleaner, more precise bass. This unique configuration ensures vibration-free performance, delivering immersive low frequencies with unmatched clarity and stability in any environment.

Ultra-low frequencies down to 47 Hz (for ARCHI210) and even 26Hz (for ARCHI10x), create a rich, immersive bass experience. Perfectly balanced and precise, it brings cinematic warmth and powerful depth to any space.

ARCHI210



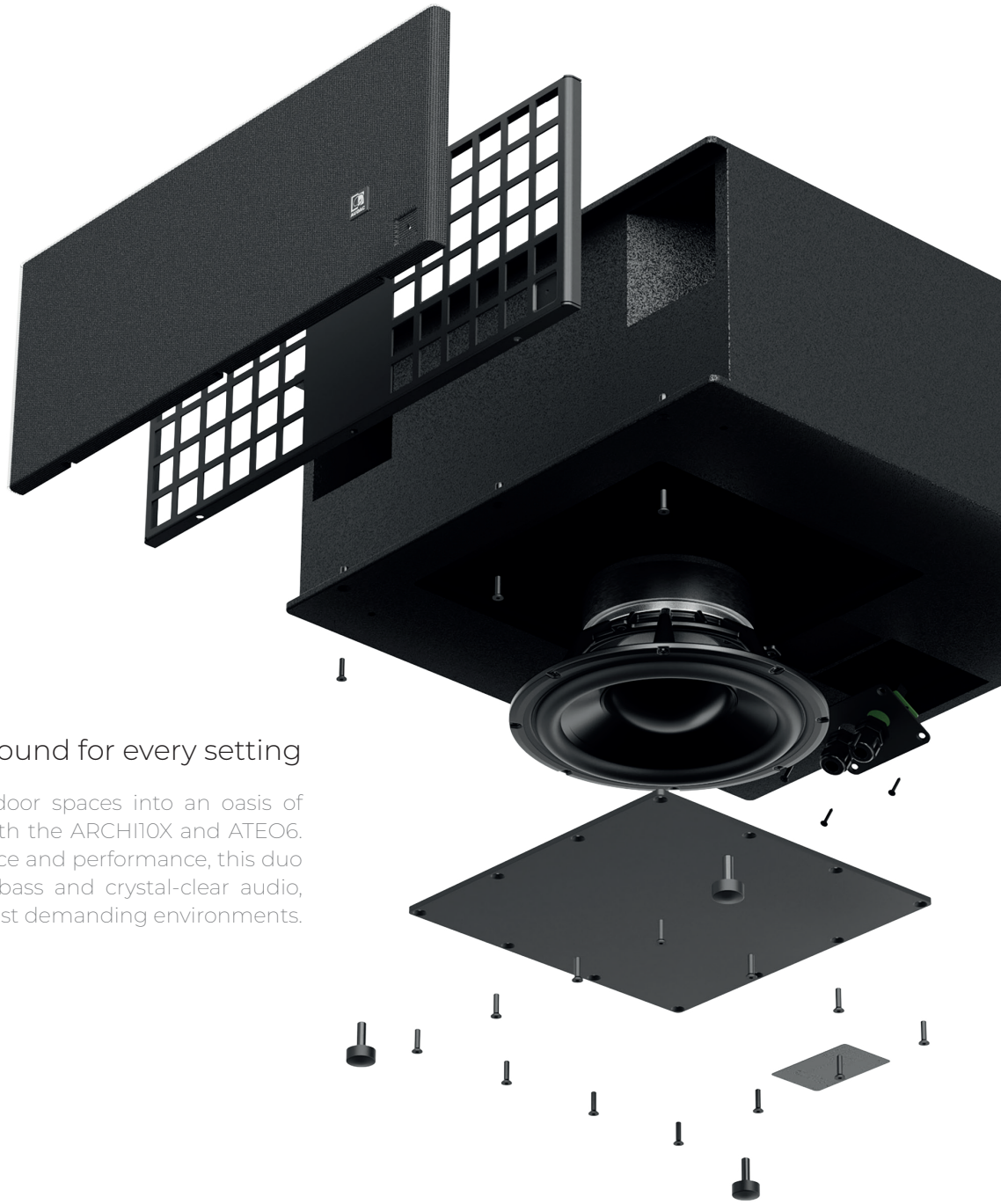
## Compact elegance in every space

Architectural elegance with a compact design, fitting seamlessly into any space - even under a sofa. Its discreet form delivers powerful, immersive sound without compromising aesthetics or functionality, perfect for any environment.



# ARCHI10X

*Why choose the ultra-compact 10" architectural infa-subwoofer?*

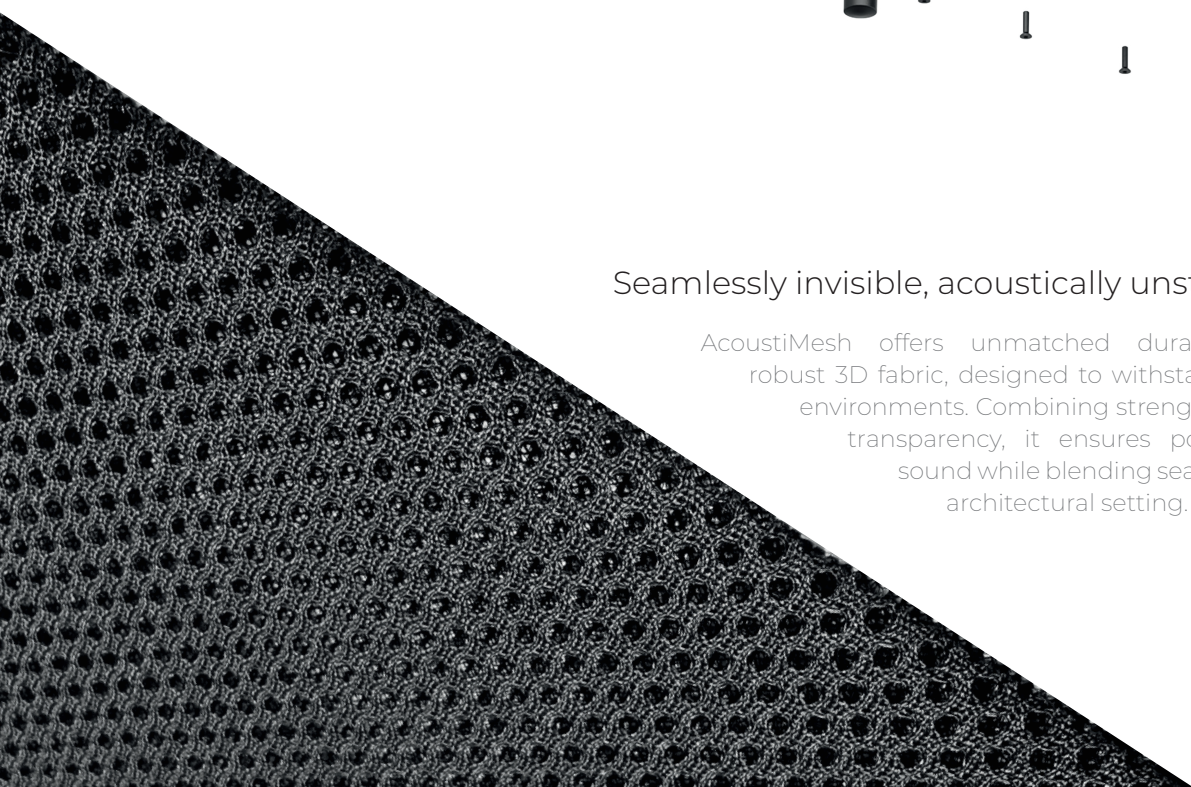


## Seamless sound for every setting

Transform your outdoor spaces into an oasis of immersive sound with the ARCHI10X and ATEO6. Designed for elegance and performance, this duo delivers rich, warm bass and crystal-clear audio, even in the most demanding environments.

## Seamlessly invisible, acoustically unstoppable

AcoustiMesh offers unmatched durability with its robust 3D fabric, designed to withstand demanding environments. Combining strength with acoustic transparency, it ensures powerful, precise sound while blending seamlessly into any architectural setting.



## AeroVent - Power meets precision

Experience the revolution in low-frequency performance with AeroVent - an exponential low-noise vent design engineered for the ARCHI series. AeroVent minimizes airflow noise while maximizing sound impact, delivering deep, precise bass even at the highest power levels.



## Built to brave the elements, sound for every setting

Transform outdoor spaces with the ARCHI10X/OB (black version only), built for extreme durability with marine-grade plywood, phenolic glue, Dura-Polyurea coating, stainless steel fasteners, and a galvanized-treated grill. Resistant to UV, rain, and extreme temperatures, it delivers reliable, powerful sound for terraces, hospitality, and residential settings.

**/OB** version only



# AUDAC product families

An overview - Inspired by sound



## Innovative sound products



### Atellio family

Networked sound & control

- ✓ LUNA-F
- ✓ LUNA-U + ANM88
- ✓ NWP & NCP series
- ✓ NIO series
- ✓ AMP203
- ✓ SMA, SMQ & PMQ series + ANI44XT
- ✓ MFA series + ANI44XT
- ✓ XMP series + ANX44X
- ✓ VEXO series + ANI44XT
- ✓ More to come...



### Consenso family

Networked control

- ✓ MTX series
- ✓ ARU series
- ✓ MFA series
- ✓ XMP series
- ✓ AMP523
- ✓ APC100



### Soveno family

Non-networked sound & control

- ✓ PRE series
- ✓ SCP, CEP & DPA series
- ✓ SMA, SMQ & PMQ series
- ✓ CAP series
- ✓ EPA & COM series
- ✓ ISP & TSP series
- ✓ AMP22
- ✓ AGP20, ATU44 & ALI20
- ✓ VEXO series
- ✓ ARES5A
- ✓ IMEO2

## Network control panels

- ✓ NCP series

### Network mixing panels

- ✓ NWP series

### Network I/O expanders

- ✓ NIO series

### Network paging microphones

- ✓ NPM series

### Analogue wall inputs

- ✓ WP2xx, WLI, WMI & MWX series

### Analogue wall inputs

- ✓ WP2xx series + 24V DC power supply (PSD24I)

### Analogue wall controllers

- ✓ VC & MWX series



AUDAC Touch™









A world of possibilities

## Total solutions for



### Premium sound loudspeakers

Seamlessly enrich environments with balanced audio solutions, delivering subtle and immersive music experiences tailored for hospitality, retail and corporate spaces.



### Performance loudspeakers


Create impactful atmospheres with dynamic audio systems designed to deliver powerful and vibrant sound for bars, clubs and event venues.




### Public adress loudspeakers

Ensure clear and reliable communication with scalable public address solutions, perfect for announcements, emergency alerts, and ambient sound in large venues and public spaces.

Stay tuned on our socials

 [info@audac.eu](mailto:info@audac.eu)

 [facebook.com/audacaudio](https://facebook.com/audacaudio)

 [x.com/audacaudio](https://x.com/audacaudio)

 [youtube.com/user/audacaudio](https://youtube.com/user/audacaudio)

New products 2025

