

RADIO

SOUND LIGHT



MATERIEL

MULTIMEDIA SOLUTIONS

Experts in
PA/VA Systems



LDA
audioTech



1. WHO WE ARE

2. REFERENCES

3. NEO: Virtue is in the middle way

4. ONE: Who said small?

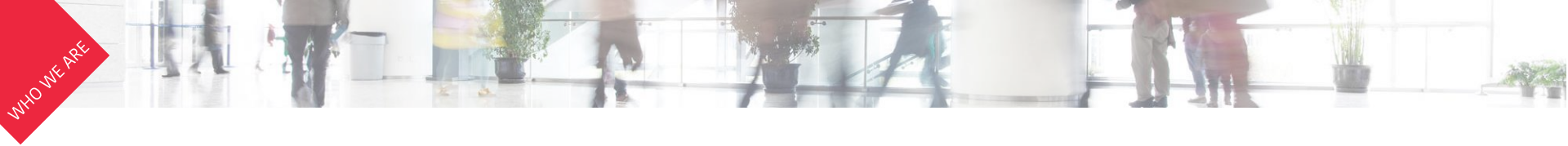


WHO WE ARE



1. WHO WE ARE





WHO WE ARE

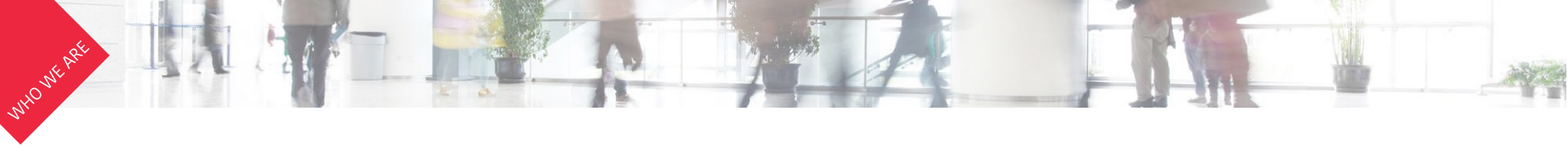


ABOUT US

Spanish manufacturer of **PA/VA systems**
40 years of experience



- **High Quality**
- **Price Competitive**
- **Service**



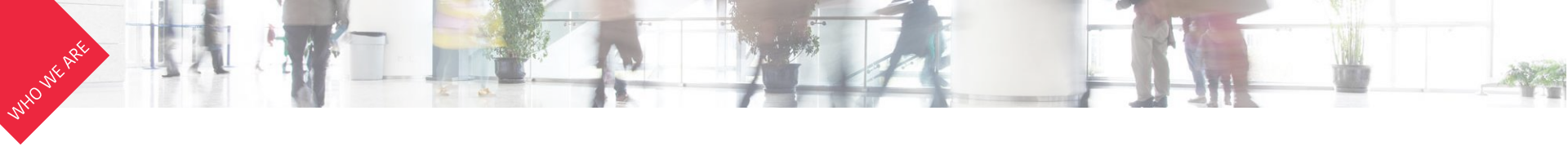
WHO WE ARE



OUR FIGURES

- **> 130 released products**
- **> 1300 finished projects**
- **In 42 countries**





WHO WE ARE



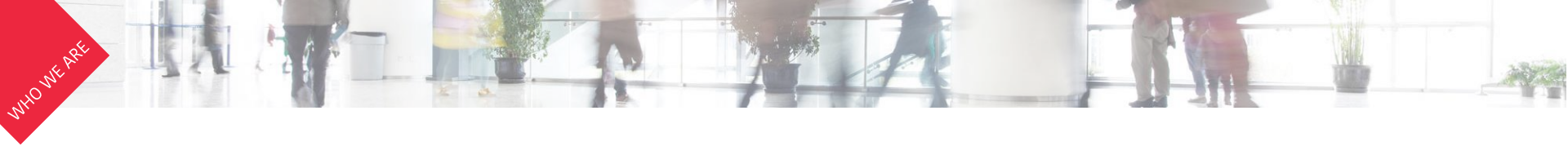
OUR LINES OF PRODUCT

EN 54 -16

NEO

one





WHO WE ARE



OUR LINES OF PRODUCT



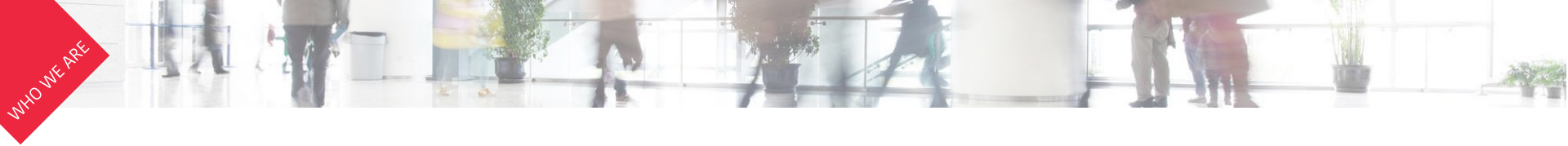
NEO

one

- Large & Medium Projects
- Advanced Functions

- Small Projects
- Entry Level

MADE IN SPAIN



WHO WE ARE



OUR LINES OF PRODUCT

EN 54 -16

ACCESSORIES





WHO WE ARE



OUR LINES OF PRODUCT

SPEAKERS





REFERENCES



2. REFERENCES





Over 80 shopping centres of “**El Corte Inglés**” in Spain and Portugal



IKEA Centres



Real Plaza (Peru)





LDA | RETAIL
audioTech

Zara, Armani, Calvin Klein, Massimo Dutti...





CORPORATE BUILDINGS

Financial City of Santander Banking Group (Spain)





CORPORATE BUILDINGS

Qatar Foundation Headquarters





UNIVERSITIES

Rey Juan Carlos University (Spain)



Hospital of Ceuta





LDA | SPORT CENTRES
audioTech

Madrid “Magic-Box” Sports Center





EXHIBITION CENTRES

IFEMA (Madrid)





REFERENCES

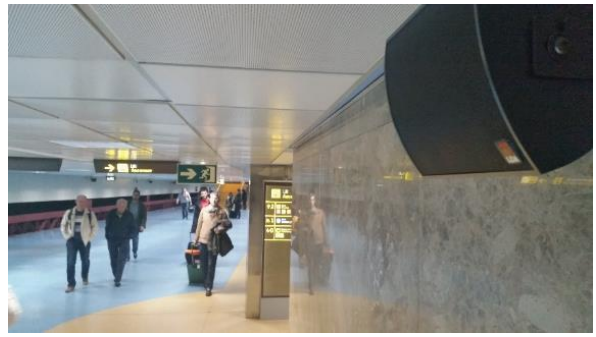


RAILWAY NETWORKS

Metro of Malaga, Seville, Valencia...



Madrid Barajas International Airport







EXPOSSIBLE!





3. NEO: Virtue is in the middle way

NEO



NEO SYSTEM

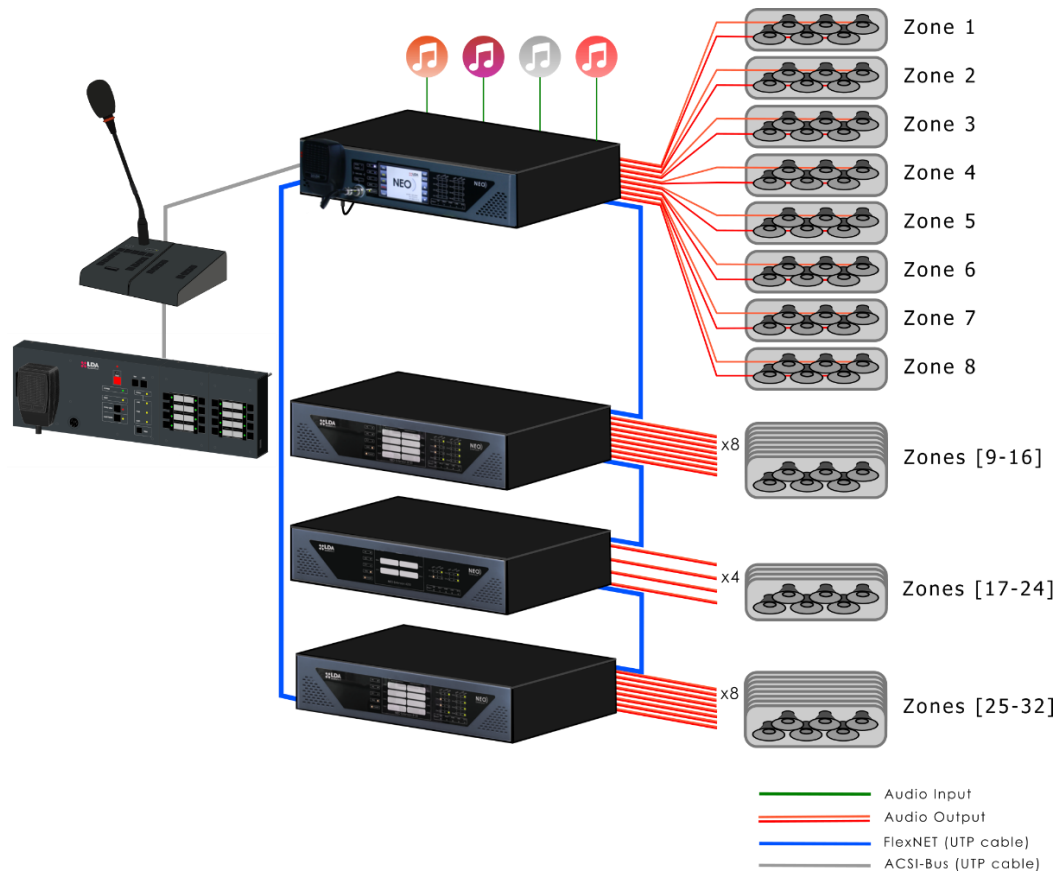
EN 54 -16

NEO



- **Medium + Large Projects**
- **High-end Features**
- **All-in-a-box Solution**

NEO



NEO 8060: Master Unit

8 x 120 W



- 8 integrated amplifiers
- 8 local sources + 32 remote sources
- FULL MATRIX: 40 x 1024



NEO Extensions

NEO 4250E: 4 x 250W
2 x 500W



NEO 4500E: 4 x 500W
2 x 1000W



NEO 8250E: 8 x 250W



NEO 4500LE: 4 x 500W
@ 4 ohm





MPS-8Z: Multi-Zone Paging Microphone



MPS-8Z

Up to 7 x MPS-8K
(Keyboard extensions)



64 buttons

VAP-1: Voice Alarm Panel



VAP-1: Fireman's Panel + VAP-8K: Extensions



NEO

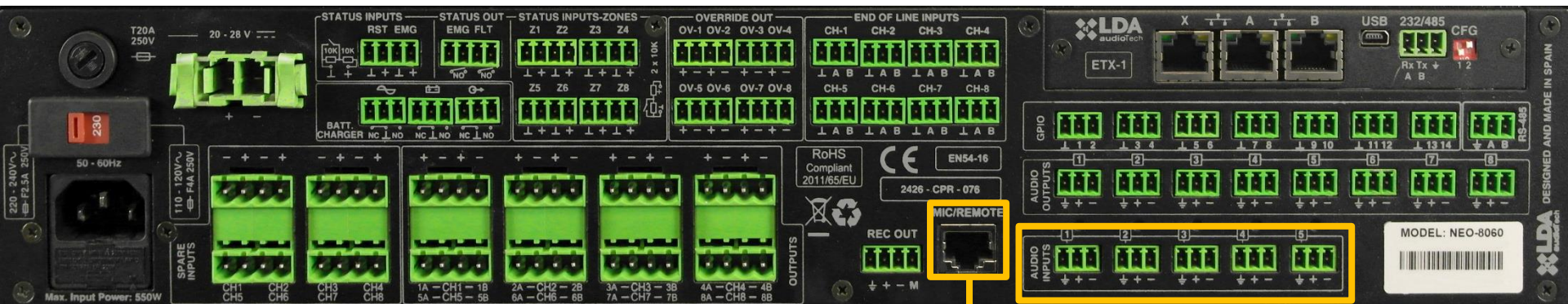
 **LDA** | INPUTS
audioTech

8 local sources

NEO



REAR SIDE



4 or 5 balanced
audio analogue
inputs

ACSI bus input:

- VAP-1
- MPS-8Z



- ▶ Audio
- ▶ Control
- ▶ Power



8 x MPS-8Z or VAP-1



Up to 1000 m



NEO



FRONT SIDE



**Frontal PTT
microphone**

**2 simultaneous
message players**

99 messages
12 hours

8 local sources

- **4 x Balanced audio** analogue inputs with **DSP**
- **1 x Microphone ACSI BUS input** (up to 8 microphones)
- **2 x Message Player** (up to 99 messages, 12 hours)
- **1 x Frontal PTT Microphone**

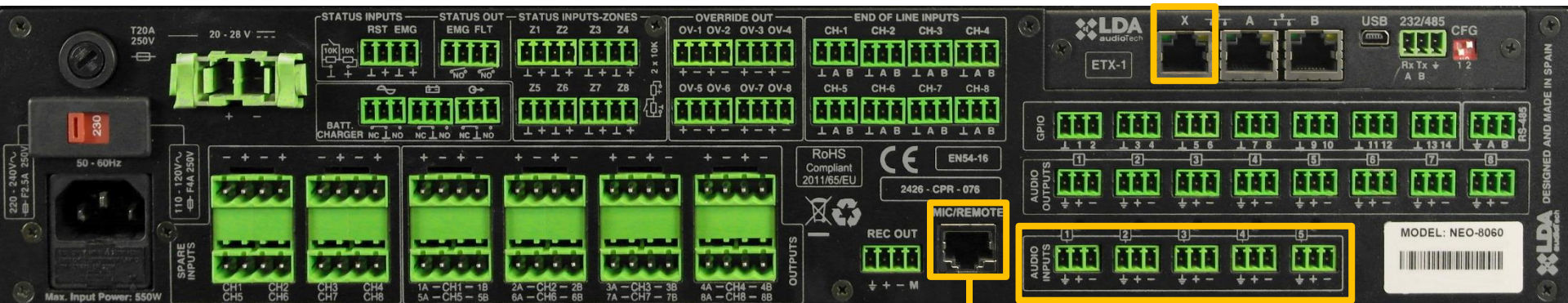
+ 32 remote sources (Cobranet)

NEO



REAR SIDE

32 remote sources
(Cobranet)



4 or 5 balanced
audio analogue
inputs

ACSI bus input:

- VAP-1
- MPS-8Z



ZES-22: Analog-CobraNet Converter



8 local sources

- **4 x Balanced audio** analogue inputs with **DSP**
- **1 x Microphone ACSI BUS input** (up to 8 microphones)
- **2 x Message Player** (up to 99 messages, 12 hours)
- **1 x Frontal PTT Microphone**

+ 32 remote sources (Cobranet)



OUTPUTS

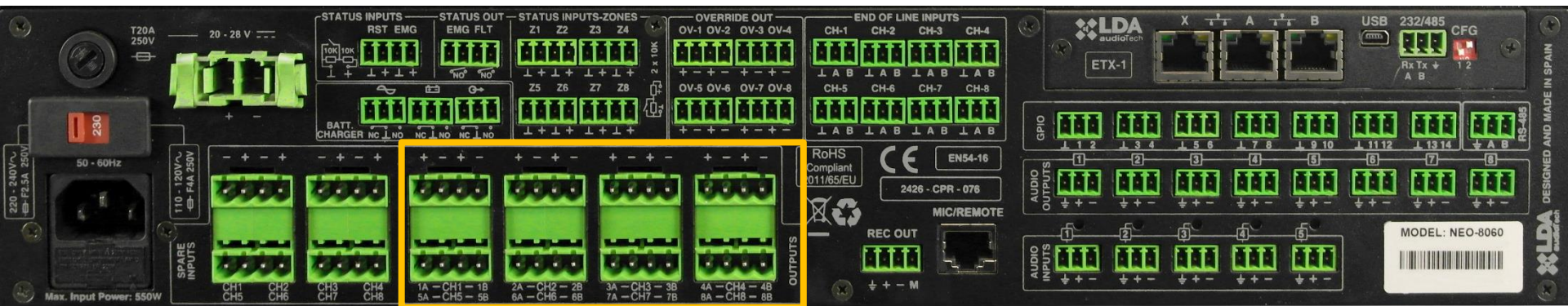
8 – 1024 channels

- 120 W – 1000 W amplifiers
- Flexible power

NEO



REAR SIDE



Amplifier outputs

DESIGNED AND MADE IN SPAIN
LDA audioTech

MODEL: NEO-8060
[Barcode]



FLEXIBLE POWER: NEO 4250E

OUT	POWER
#1	250 W
#2	250 W
#3	250 W
#4	250 W

OUT	POWER
#1	500 W
#2	500 W
#3	0 W
#4	0 W

OUT	POWER
#1	500 W
#2	0 W
#3	500 W
#4	0 W

OUT	POWER
#1	0 W
#2	0 W
#3	500 W
#4	500 W

OUT	POWER
#1	200 W
#2	300 W
#3	100 W
#4	400 W



FLEXIBLE POWER: Summary

NEO 4250E

OUT	POWER	MAX
#1	500 W	1000 W
#2	500 W	
#3	500 W	
#4	500 W	

NEO 4500E

OUT	POWER	MAX
#1	1000 W	2000 W
#2	1000 W	
#3	1000 W	
#4	1000 W	



OUTPUTS

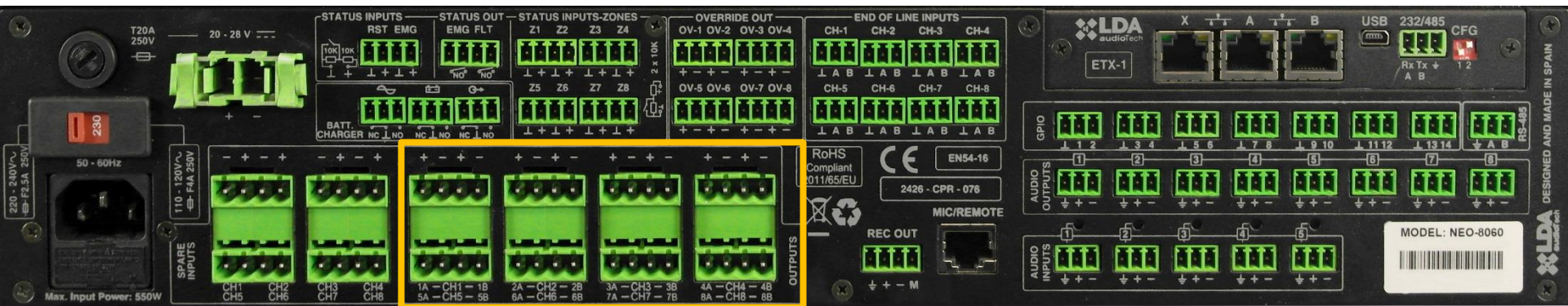
8 – 1024 channels

- 120 W – 1000 W amplifiers
- Flexible power
- A+B wiring

NEO



REAR SIDE

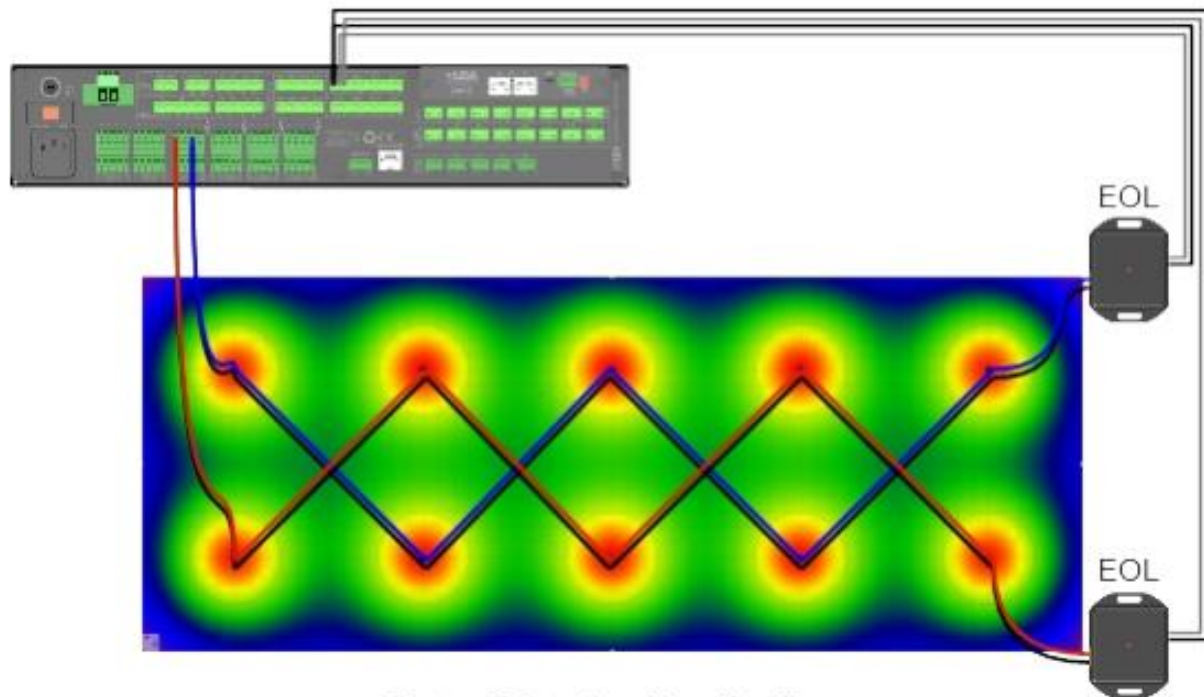


8 amplifier channels
(A+B wiring: 16 lines)

DESIGNED AND MADE IN SPAIN
LDA audioTech

MODEL: NEO-8060
[Barcode]

A+B WIRING



Picture 45: Speakers Line. AB wiring



OUTPUTS

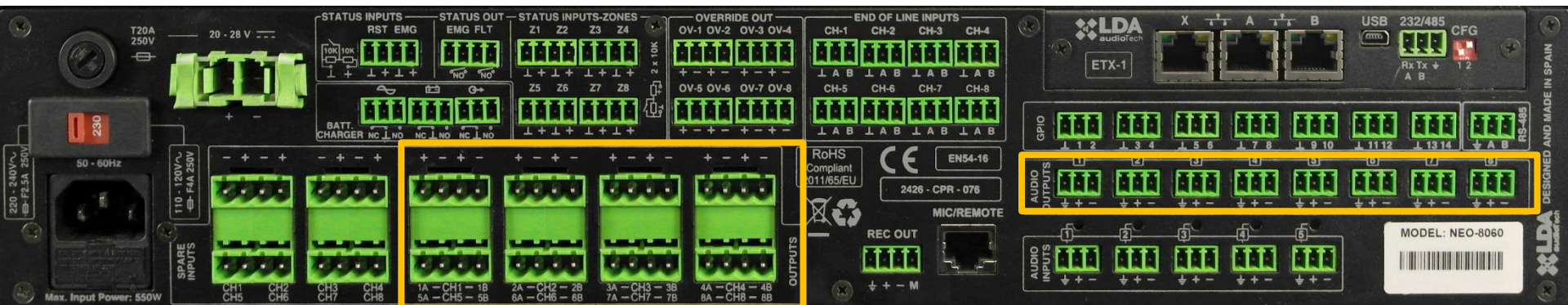
8 – 1024 channels

- 120 W – 1000 W amplifiers
- Flexible power
- A+B wiring
- Balanced Pre-Amplified Outputs

NEO



REAR SIDE



8 amplifier channels
(A+B wiring: 16 lines)

8 pre-amp outputs



OUTPUTS

8 – 1024 channels

- 120 W – 1000 W amplifiers
- Flexible power
- A+B wiring
- Balanced Pre-Amplified Outputs
- Backup Amplifier

NEO



BACKUP AMPLIFIER

NEO8060: 8 x 120W



NEO 8250E: 8 x 250W



7+1

NEO 4250E: 4 x 250W
2 x 500W



NEO 4500E: 4 x 500W
2 x 1000W



3+1 or 1+1 ?

NEO



BACKUP AMPLIFIER

NEO8060: 8 x 120W



NEO 8250E: 8 x 250W



7+1

NEO 4250E: 4 x 250W
2 x 500W



NEO 4500E: 4 x 500W
2 x 1000W



3+1 or 2+1

BACKUP AMPLIFIER 2+1

OUT	POWER
#1	500 W
#2	0 W
#3	500 W
#4	0 W

Total Power: 1000 W

BACKUP AMPLIFIER 2+1

OUT	POWER
#1	500 W
#2	0 W
#3	500 W
#4	500 W

Total Power: 1000 W

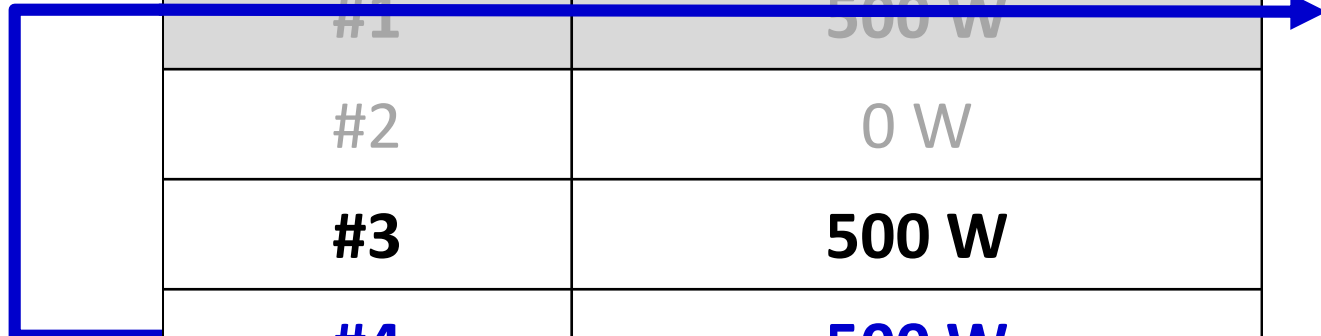
BACKUP AMPLIFIER 2+1

OUT	POWER
#1	500 W
#2	0 W
#3	500 W
#4	500 W

Total Power: 500 W

BACKUP AMPLIFIER 2+1

OUT	POWER
#1	500 W
#2	0 W
#3	500 W
#4	500 W



Total Power: 1000 W



OUTPUTS

8 – 1024 channels

- 120 W – 1000 W amplifiers
- Flexible power
- A+B wiring
- Balanced Pre-Amplified Outputs
- Backup Amplifier
- Speaker Lines Supervision



SPEAKER LINES SUPERVISION

NEW METHOD:

Impedance Measurement (19 kHz)

+

End Of Line Device (v2)

- No return cable
- No minimum load
- More accurate (Tolerance < 10%)
- Until the last speaker





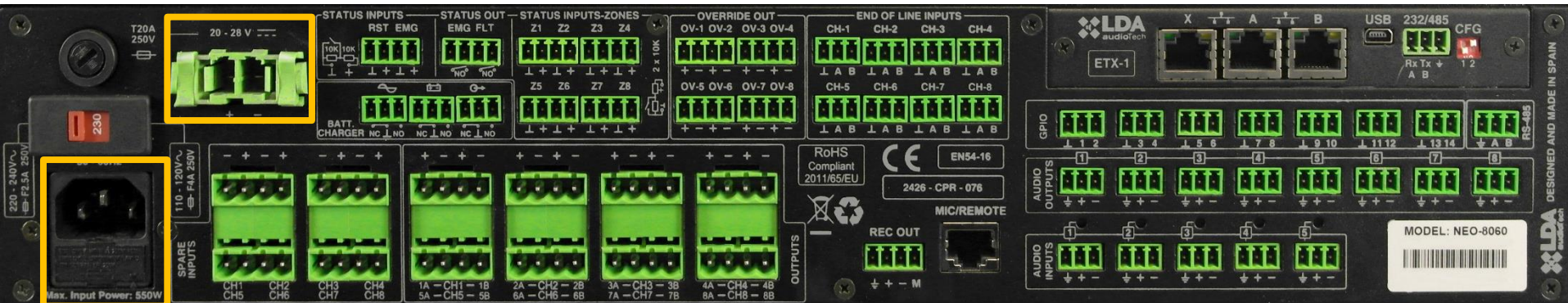
SUMMARY: Inputs & Outputs

- **40 x 1024 FULL DIGITAL MATRIX** with DSP
 - **4 Balanced Inputs**
 - **8 Microphones/Panels**
 - **2 Simultaneous Messages**
(99 messages, 12 hours)
 - **Frontal PTT Microphone**
 - **32 Remote Inputs** (Cobranet)
 - **Flexible Amplifiers**
 - **From 120W to 1000W**
 - **A+B Wiring**
 - **Balanced Pre-Amp Outputs**
 - **Backup Amplifier**
 - **Speaker Lines Supervision**

- **Dual Power Supply:**

230V AC + 24V Battery Charger

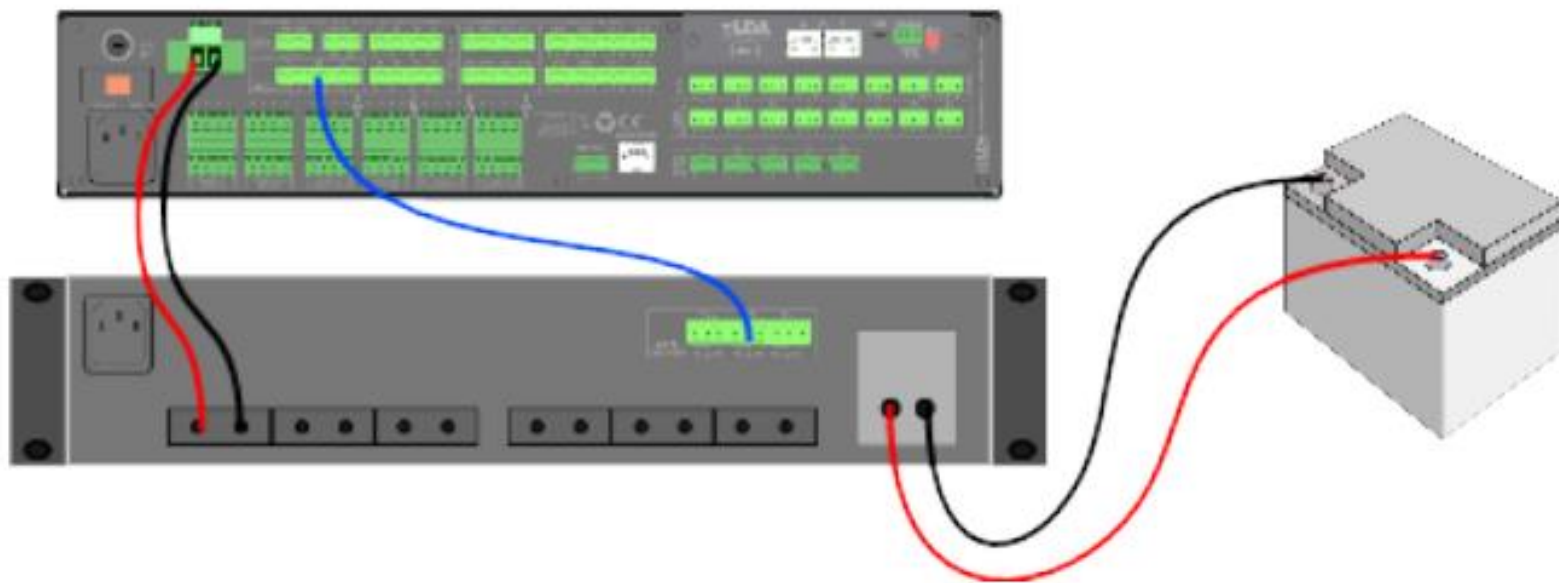
24 V Battery Charger Power Supply



Main 230V AC Power Supply

- **Dual Power Supply:**
230V AC + 24V Battery Charger
- **EN 54-24 Battery Charger Support:**
 - 2 x 12V batteries
 - 24h standby + 30' Full Power: **40 Ah / device**

BATTERY CHARGER CONNECTION

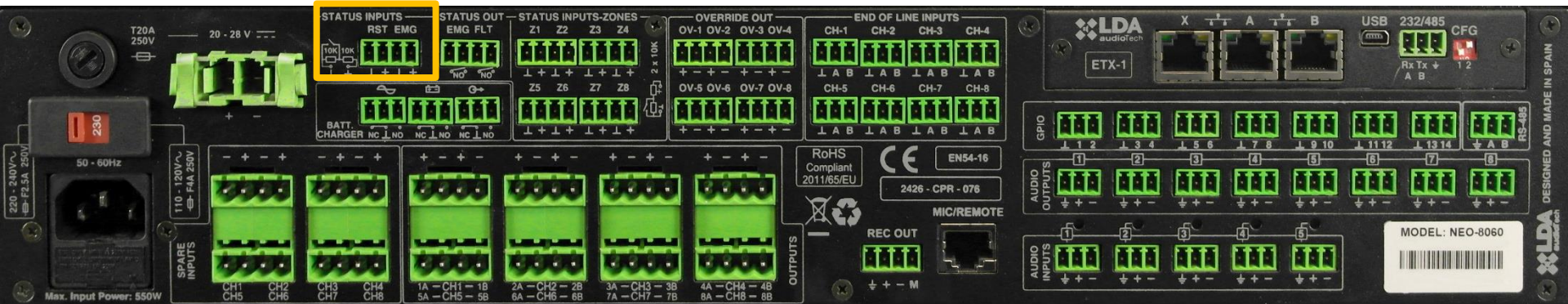


- **Dry Contacts (Relays):**
 - General Alarm + Reset

NEO



REAR SIDE



DESIGNED AND MADE IN SPAIN



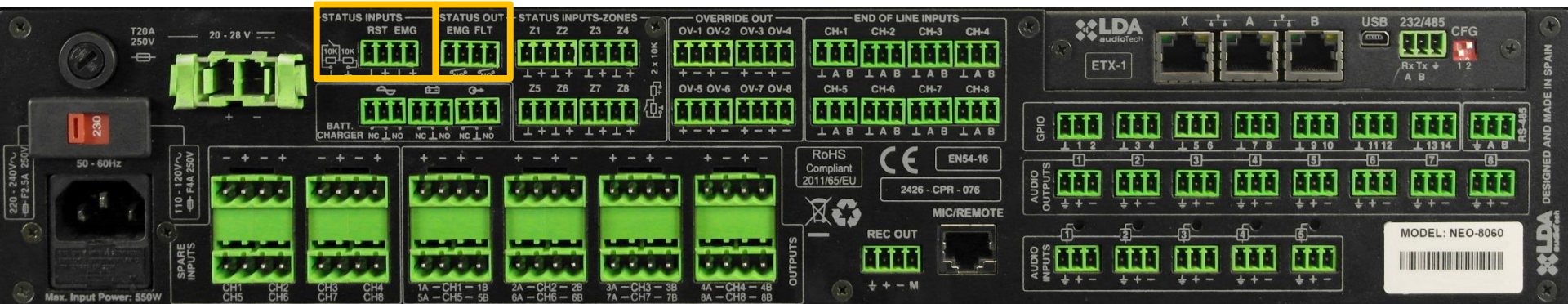
- **Dry Contacts (Relays):**

- General Alarm + Reset
- EMG on + FLT on

NEO



REAR SIDE



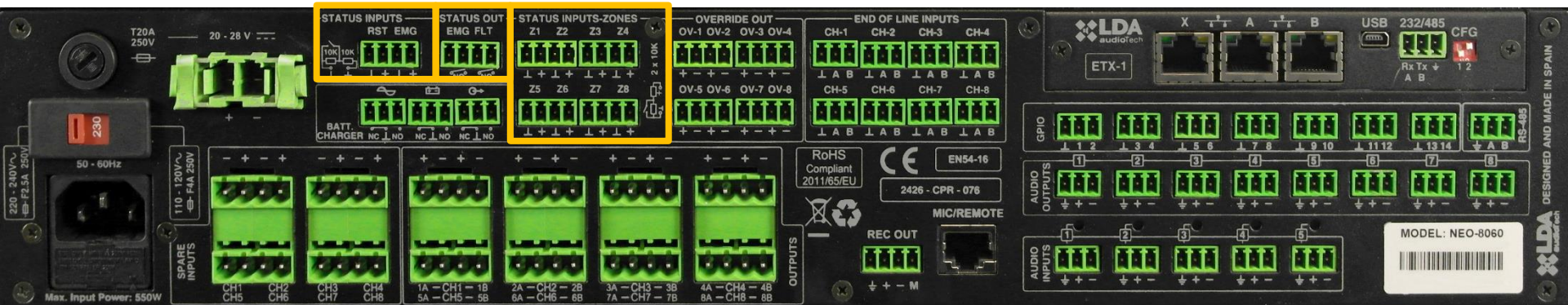
▪ **Dry Contacts (Relays):**

- General Alarm + Reset
- EMG on + FLT on
- 1024 x Zones Alarm

NEO

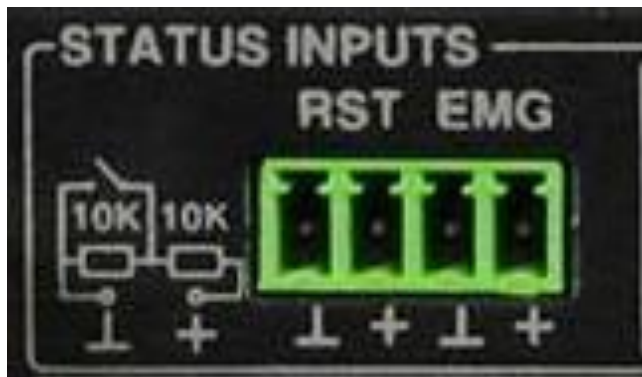


REAR SIDE



- **Dry Contacts (Relays):**
 - General Alarm + Reset
 - EMG on + FLT on
 - 1024 x Zones Alarm
- **Fully Supervised from NEO**

- **Fully Supervised from NEO**

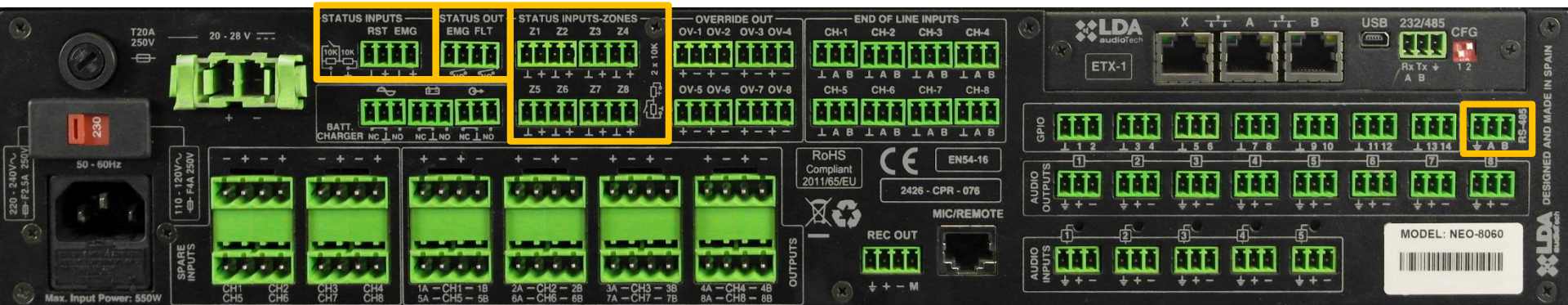


- **Dry Contacts (Relays):**
 - General Alarm + Reset
 - EMG on + FLT on
 - 1024 x Zones Alarm
- **Fully Supervised from NEO**
- **Advanced Integrations:** RS485 Serial Port

NEO



REAR SIDE





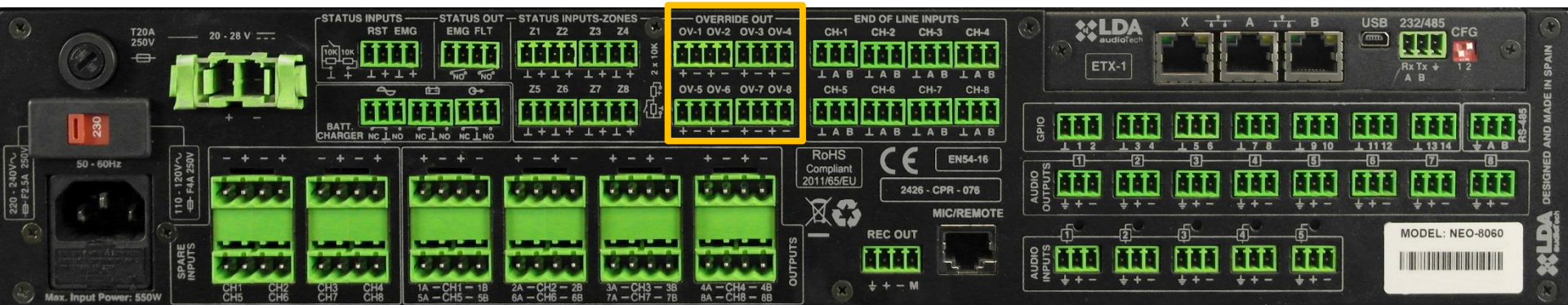
ADVANCED INTEGRATIONS

- **Override Outputs 24V**
 - Attenuators
 - Flash lights
 - 3rd party systems

NEO



REAR SIDE





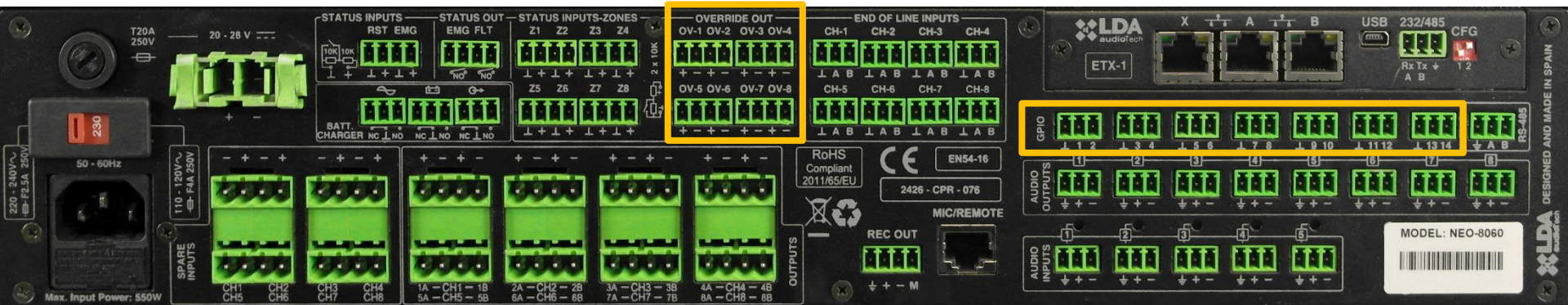
ADVANCED INTEGRATIONS

- **Override Outputs 24V**
 - Attenuators
 - Flash lights
 - 3rd party systems
- **14 x GPIOs**

NEO



REAR SIDE



DESIGNED AND MADE IN SPAIN





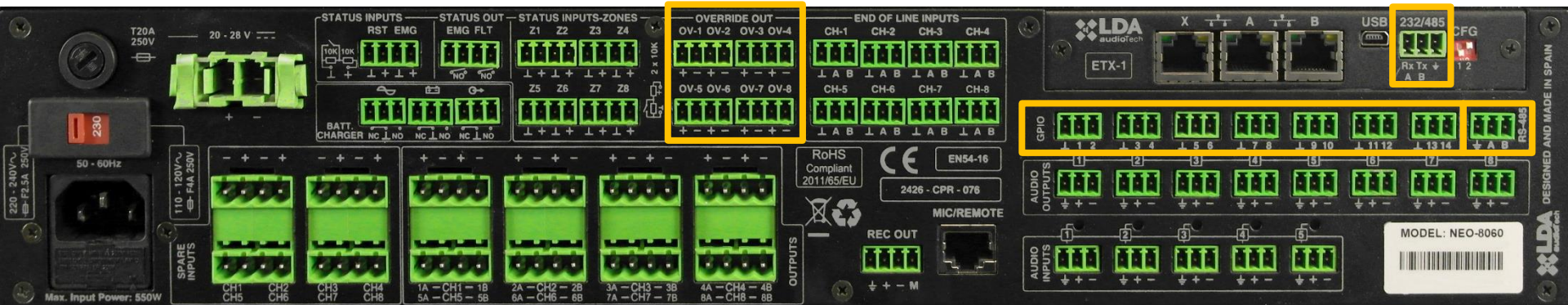
ADVANCED INTEGRATIONS

- **Override Outputs 24V**
 - Attenuators
 - Flash lights
 - 3rd party systems
- **14 x GPIOs**
- **2 x RS485 Serial Ports**

NEO



REAR SIDE



DESIGNED AND MADE IN SPAIN



- **2 x RS485 Serial Ports**
 - SPECIAL CASE: **VCC 64 Volume & Channel Controller**





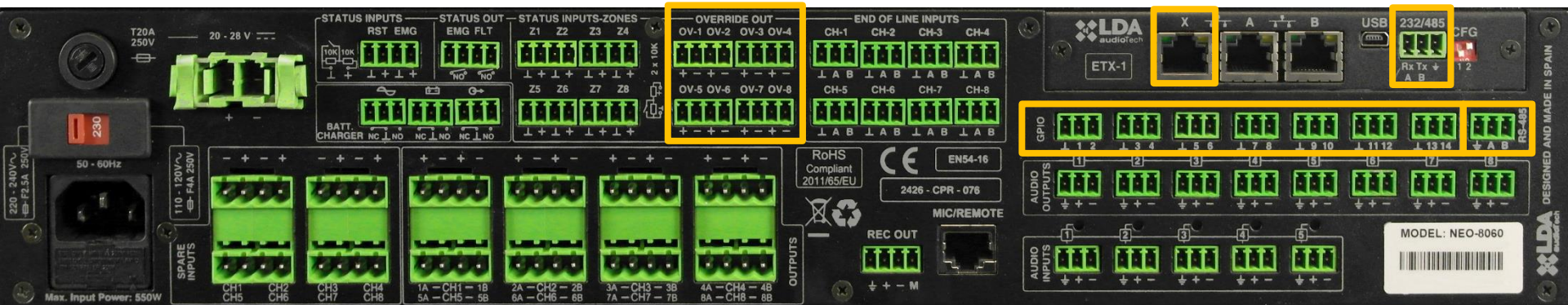
ADVANCED INTEGRATIONS

- **Override Outputs 24V**
 - Attenuators
 - Flash lights
 - 3rd party systems
- **14 x GPIOs**
- **2 x RS485 Serial Ports**
- **UDP Ethernet Commands**

NEO



REAR SIDE





ADVANCED INTEGRATIONS

- **Override Outputs 24V**

- Attenuators
- Flash lights
- 3rd party systems

- **14 x GPIOs**

- **2 x RS485 Serial Ports**

- **UDP Ethernet Commands**

- Intercomm
- IP Telephones
- Building Management Systems
- ...



ADVANCED EVENT MANAGER

- **Schedule Events in Time & Date:**
 - Messages
 - Audio Source Channel
 - Volume Levels
- **Phased Evacuation**
 - EVAC and ALERT on different zones and delays
- **Easy Programming of Automatic Events**

NEO



NEO CONFIGURATOR

NEO Configurator v0.2.2.11

NEO 





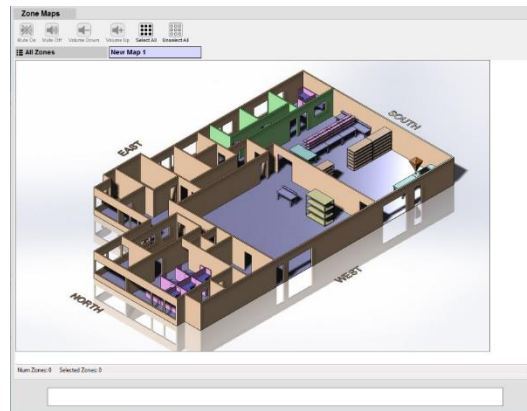




NEO CONTROL

Remote control for NEO systems

- Easy to configure
- Volume & Channel Control
- System Monitoring

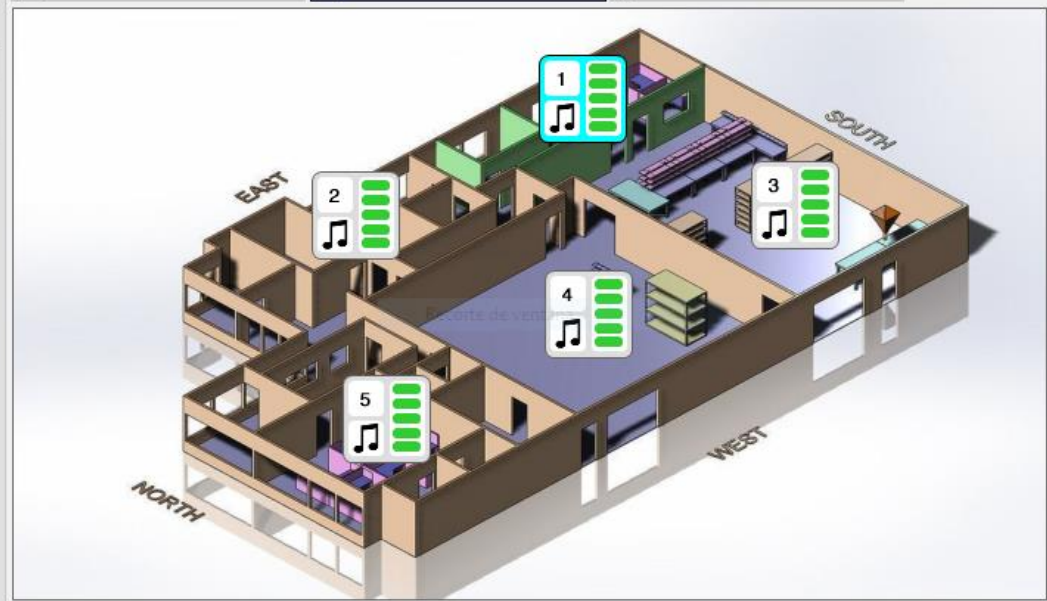


Sources

Id	Name	Gain	Mute
01	Source #1	-10 dB	<input type="checkbox"/>
02	Source #2	-10 dB	<input type="checkbox"/>
03	Source #3	0 dB	<input type="checkbox"/>
04	Source #4	0 dB	<input type="checkbox"/>

Zone Maps

All Zones
 Floor 1
 Floor 2



Num Zones: 5 Selected Zones: 1

Sources Events

System Monitor

2018-03-20 _ 11:49:31 _ Connected to system PA/VA System [192.168.0.3]
 2018-03-20 _ 11:53:47 _ Disconnected from system PA/VA System [192.168.0.3]
 2018-03-20 _ 11:54:25 _ Connected to system PA/VA System [192.168.0.3]



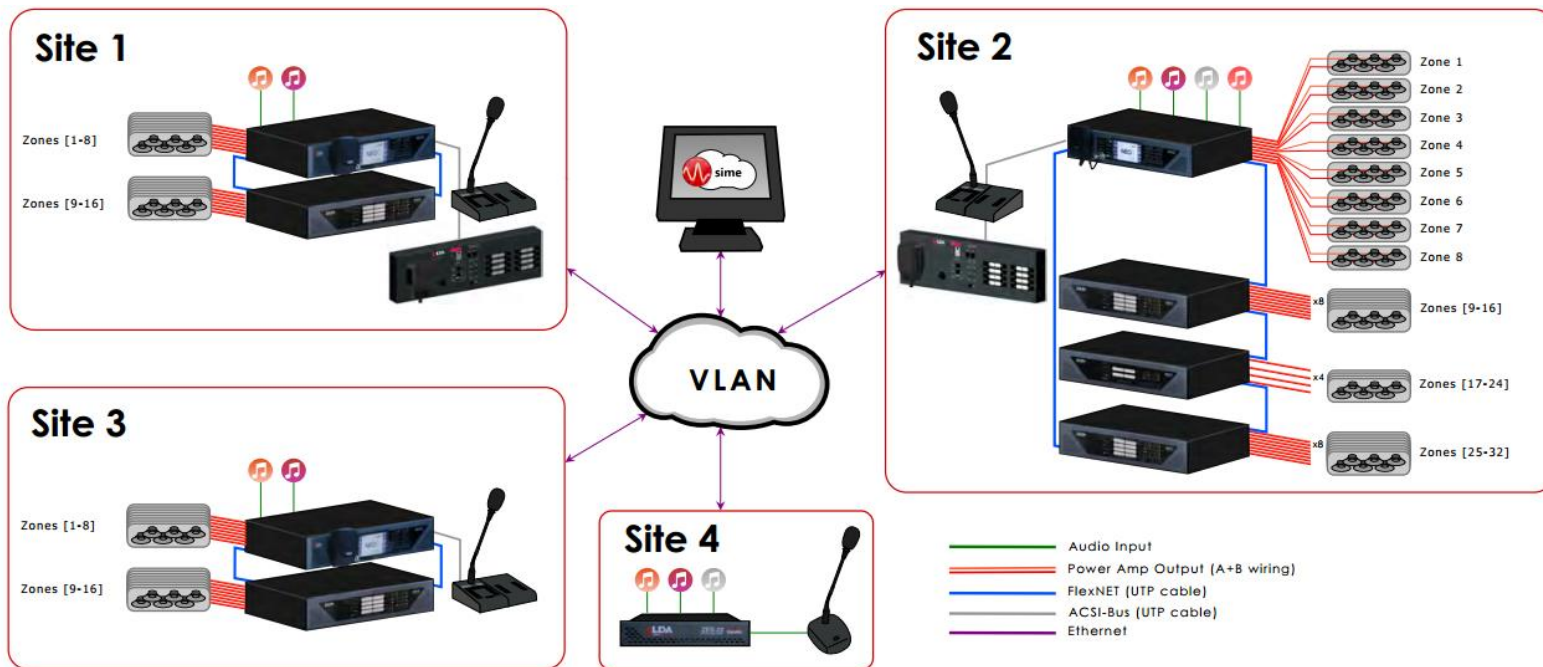
SIME SOFTWARE

Central Control for Multiple Systems

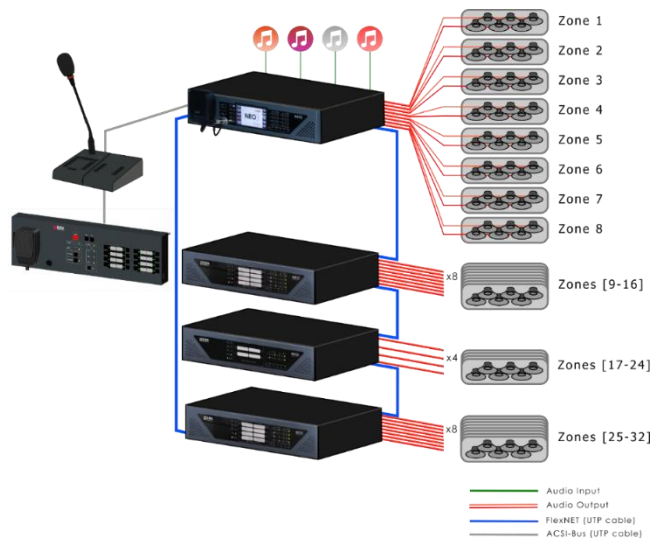
- Easy & Intuitive
- Integration with 3rd party systems
- Multi-platform access



MULTI-SITE SYSTEM

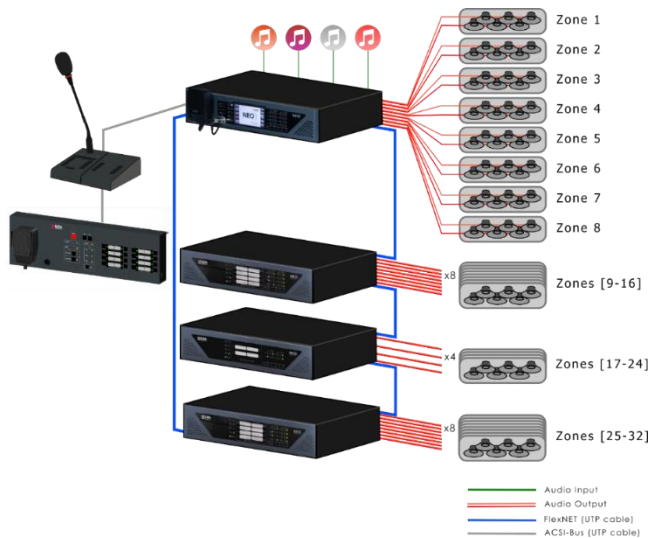


NEO



- ✓ **40 x 1024** Full Digital Matrix
- ✓ **Balanced** Audio & Inputs with **DSP**
- ✓ Flexible Amplifiers (**120W-1000 W**)
- ✓ **99 messages**, 12 hours
- ✓ **Backup Amplifiers**
- ✓ Easy **Integration**
- ✓ **Events Scheduler**
- ✓ **NEO Configurator + NEO Control + SIME**

NEO



[Video: NEO System](#)



ONE

4. ONE: Who said small?

ONE



ONE: Who said small?



ONE



ONE: Who said small?

one

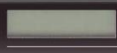
WHO SAID SMALL?

EN 54 -16 / -4

- **Full PA/VA System**
+ Integrated Battery Charger
- **Small Projects**
- **Extremely easy to install**



FX
FLY
LDA
PUSH



one

**EN 54 -16 / -4**

Battery Charger 12V
designed by LDA

Battery 12V, 22Ah



3 x Audio Inputs

- Balanced Audio
- PRIO 1 + PRIO 2 dry contacts
- Optional Mixer



1 x Bus ACSI



MPS-8Z

Public Address



VAP-1

Voice Alarm

EN 54-16



MPS-8Z: Multi-Zone Paging Station



MPS-8Z: Paging Microphone

8 Buttons for Zone Call

ONE



VAP-1: Voice Alarm Panel

EN 54-16

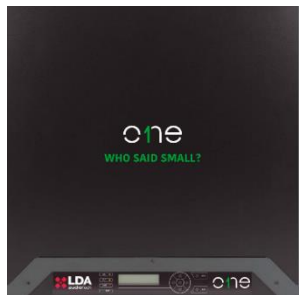


VAP-1: Fireman's Panel + **VAP-8K: Extension**

ONE



BUS ACASI



- ▶ Audio
- ▶ Control
- ▶ Power



8 x MPS-8Z or VAP-1



Up to 1000 m



6 AUDIO SOURCES



1 x Bus ACSI

3 x Audio Inputs

2 x Message Players

▪ 10 minutes memory for:

✓ EVAC

EN 54-16

✓ ALERT

▪ USB upload to internal memory

ONE



AUDIO OUTPUTS



6 x Audio Outputs

2 x Amplifiers @ 500 W



6 x Audio Outputs

OUT	MAX POWER
#1	500 W
#2	500 W
#3	120 W
#4	120 W
#5	120 W
#6	120 W

Max Total Power: 500 W



6 x Audio Outputs

2 x Amplifiers @ 500 W

2 simultaneous channels
+ Backup Amplifier **EN 54 -16**



Automatic Source Priority

AUDIO SOURCE PRIORITY



Priority	AUDIO SOURCE
#1	VAP-1
#2	EVAC/ALERT message
#3	MPS-8Z
#4	Audio Input 1 (Dry contact / Noise gate)
#5	Audio Input 2 (Dry contact / Noise gate)
#6	Audio Input 3



6 x Audio Outputs

2 x Amplifiers @ 500 W

Speaker Lines Supervision
no return cable



EN 54-16



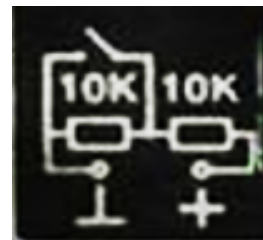
2 x Input Dry Contacts:

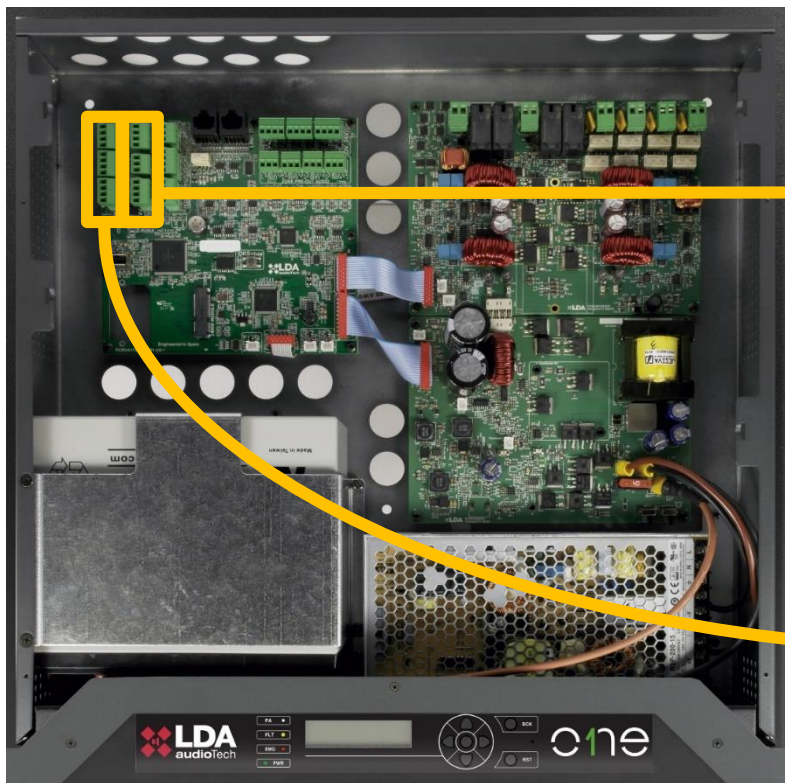
- General EVAC
- RESET

2 x Output Dry Contacts:

- Emergency ON
- Fault ON

Supervised
Connection





2 x Input Dry Contacts:

- General EVAC
- RESET

2 x Output Dry Contacts:

- Emergency ON
- Fault ON

6 x Zonal EVAC Input Dry Contacts



6 x Override Outputs 24V

- Attenuators
- Flash Lights

4 x Pre-Amplified Outputs

ONE



INSTALLATION

- **Wall & Rack Design**





ONE



INSTALLATION

- **Wall & Rack Design**
- **Plug & Set Mode**





- **Wall & Rack Design**
- **Plug & Set Mode**
 - ✓ Audio Inputs
 - ✓ Fire Alarm Supervision
 - ✓ MPS-8Z and VAP-1
 - ✓ Messages from USB
 - ✓ Audio Outputs
 - ✓ Speaker Lines Supervision
 - ✓ Battery Supervision



INSTALLATION



- **Wall & Rack Design**
- **Plug & Set Mode**
 - ✓ Audio Inputs
 - ✓ Fire Alarm Supervision
 - ✓ MPS-8Z and VAP-1
 - ✓ Messages from USB
 - ✓ Audio Outputs
 - ✓ Speaker Lines Supervision
 - ✓ Battery Supervision
- **Manual Configuration from LCD Screen**
- **USB Backup & Restore**

ONE



VERSIONS TIMELINE

ONE v1: STANDALONE

**RELEASE DATE:
May/Oct 2018**



ONE



VERSIONS TIMELINE

RELEASE DATE:
Mid-2019

ONE v2: EXPANDABLE



500 W + 500 W + 500 W + 500 W

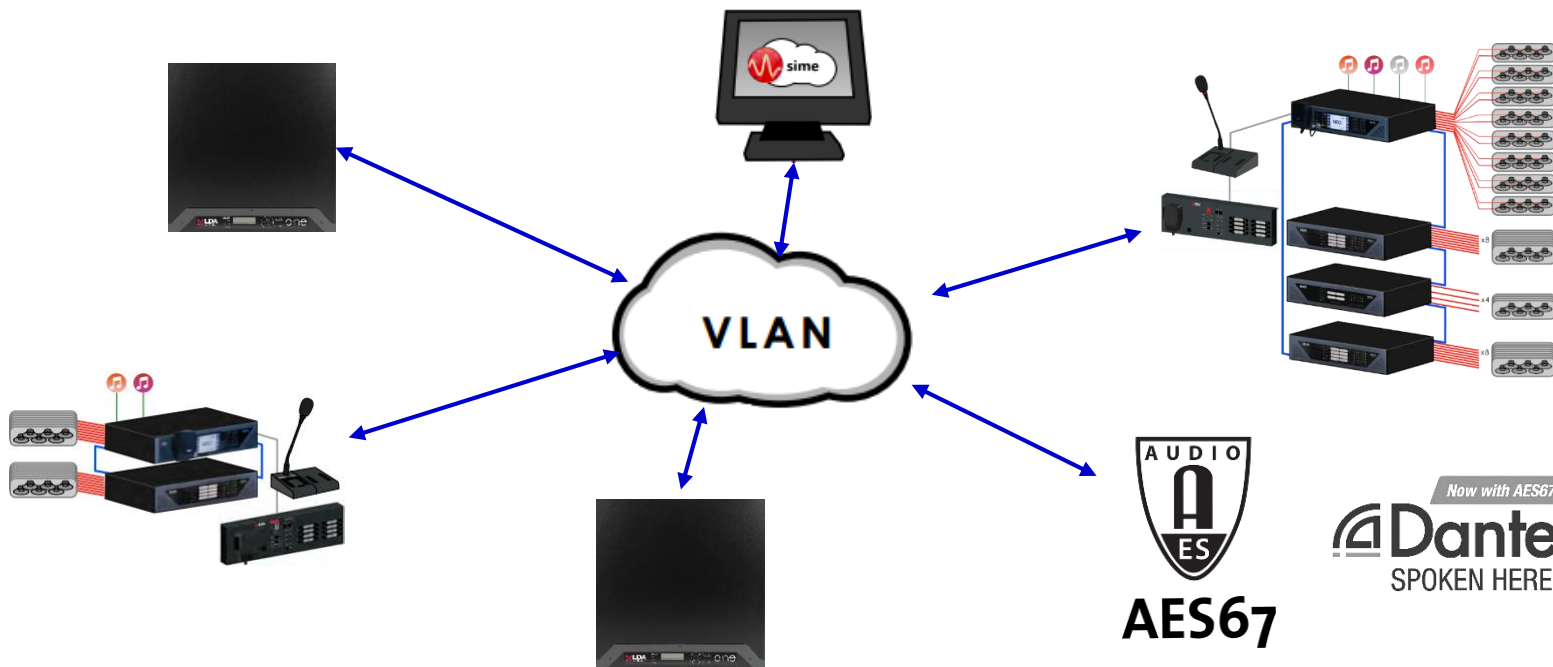
ONE



VERSIONS TIMELINE

ONE v3: IP CONNECTIVITY

RELEASE DATE:
End of 2019



Now with AES67
Dante[™]
SPOKEN HERE

ONE



ONE: Who said small?

one

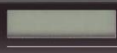
WHO SAID SMALL?

EN 54 -16 / -4

- **Full PA/VA System**
+ Integrated Batteries
- **Small Projects**
- **Extremely easy to install**



FX
FLY
LDA
PUSH



one

ONE



ONE: Who said small?



EN 54 -16 / -4





Experts in PA/VA systems



EN 54 -16





www.lda-audiotech.com

RADIO MATÉRIEL S.A.

Av. des Baumettes 21 Case postale 159 1020 RENENS VD 1
T 021 633 58 00 F 021 633 58 01 www.radio-materiel.ch