

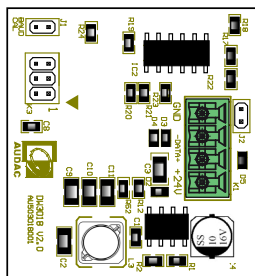


MWX43/45

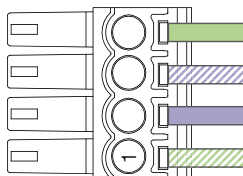
Enkel aan te sluiten door een vakman
 Connections only to be made by professionals
 Seulement à brancher par un professionnel
 Nur anzuschließen von einem Fachmann

Connections

Pin	Signal	Conductor T-568B - Straight
Pin 1	+24V DC	Green - White
Pin 2	DATA +	Blue
Pin 3	DATA -	Blue - White
Pin 4	GND	Green



PIN 4
 PIN 3
 PIN 2
 PIN 1



ATTENTION

Only connect the MWX43/45 wall panels to your matrix system when it's powered off

Brown and Orange pair should not be connected

JUMPER SETTINGS

J2 is a Bus-termination Jumper. It should only be placed when the wall panel is connected at the end of the communication line.
 (or when its the only connected thing)