



3 NOVEMBER 2019

TEST: Surround Set Miller & Kreisel Movie 5.1 system - with penchant for cinema atmosphere



by **Martin Sowa**

editor

In large cinemas space is large, the domestic private cinema, however, it is sometimes quite closely. If the available floor space very few and far between, back inevitably surround sets the focus, suitable for wall mounting. The 1,500 Euro very attractive "Movie 5.1 system" of Miller & Kreisel certainly saves on space, not on sound.



The "Movie 5.1 system" of Miller & Kreisel is ideal for the space-saving wall mounting.



Its own high and innovative claims at Miller & Kreisel care since 1974 to ensure that their speakers exceed expectations regularly. At that time, the company in Beverly Hills, California was founded. Two years later the world's first satellite / subwoofer system was called "David & Goliath" on the market. In addition to classic boxing also built-in speakers are now well represented in the portfolio. What can we make of it, the German sales Audio Reference presents the way in the form of a [demo home theaters with 7.2 setup](#) in Hamburg.

The quality of the M & K transducers but speaks not only many years of experience. Over time, the setups helped several Hollywood productions, at least indirectly to the Oscar for best sound. These include "The Lord of the Rings", "Wall-E" and "Black Hawk Down". Nevertheless, the name "Miller & Kreisel" especially among home theater novices still an insider tip. An amazing underestimation, which should be finally corrected with the "Movie 5.1 system". Finally, M & K boxes are very familiar with blockbuster sound and can bring him consistently in the four walls.



The compact surround set consists of the three LCR speakers K50, the two surround speakers and subwoofer K40T V8.



As mentioned, however, the local space is often limited and it takes compact surround sets as the "Movie 5.1 system". The floor space required for this is almost equal to zero since the five satellites are equipped from the factory with wall mounts. Specifically, it consists first of three copies of the LCR model K50. The acronym LCR stands for "Left Center Right" and states that these speakers can fill all three positions of the front stage. The surround tasks, however, takes the Tripole speakers K40T as a duo. Powerful receives support from the quintet also compact subwoofer V8 that we this year [already in the single test](#) could welcome.

Slim and very calmly

With its eleven kilograms of the V8 compared to other subwoofers is indeed anything but a heavyweight, has, however, sound good capacity. Finally, Miller & Kreisel not accidental for impressive bass performances is known. must the V8 does not make Consequently visually attention to itself and its simple box does not use unnecessary frills. Straightforward form, carefully rounded corners and edges and you have that living room compatible bass specialist. Color-exists alongside the traditional matte black even a white version that harmonizes well with bright decor styles.





It's simple and clear-cut lines also the comparatively powerful subwoofer fits perfectly into the atmosphere.

The same applies to the satellites, which also unobtrusive and especially come along very slim. Even with mounted front bezel K50 are just 8.5 centimeters "thick" and thus are little more off the wall than the also-mounted flat screen TV there. The two Tripole speakers K40T protrude as little into the room, their depth amounts included coverage to 12.2 centimeters. Thanks to its trapezoidal base, the two surround speakers, however, still does not seem absolutely massive than their slim players.

New ways to realistic sound

The trapezoidal shape of the K40T also brings a sound advantage. The two side driver of the Tripole model radiate due to this construction at a 45 degree angle. This proven in several M & K series concept causes a particularly diffuse sound and thus a higher surround effect - the sound is difficult to locate, thereby creating a very authentic world scene. In particular scenarios with a variety of background noise (for example in a football stadium or casino) thereby gain significantly plasticity. Responsible for two 2 × 3-inch broadband driver with a polymer-coated paper cone. They support the silk dome and the four-inch fiberglass woofer in the front of the boxes.



The trapezoidal shape of the K40T not only looks good, it also brings a tonal advantage for the surround sound.



Uniform image

The latter two drivers find their place in the baffle of the LCR boxes K50. Like the Tripol model is also designed the versatile front speakers in a closed construction. So firing ports do not exist, so the wall mounting is not a challenge for the customer. To this end, the boxes are even already equipped with keyhole mounts and spacers that protect the speaker cable from buckling and similar damage. be included the stripping of high-quality, gold-plated screw, which can accommodate banana plugs even - in the price range no matter of course. Because of the embedded into the housing connection box terminals are slightly angled and even without above-average sensitivity within easy reach.



Thanks to the integrated keyhole suspension and spacers, the satellites of the "Movie 5.1 system" is quickly installed.

Powerhouse bass segment

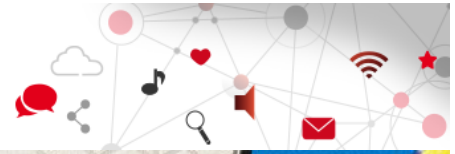
Significantly more space offers the back of the subwoofer. In "Movie 5.1" set the model comes V8 used that two pairs of RCA connectors has to offer. This is both to an input (also by mono cable to use) and one output. They are joined by three knobs for fine adjustment of cut-off frequency (crossover) phase and volume (Volume). As this is the V8 to a powered subwoofer, it also has a power connection and the option to automatically turn it on as soon as a signal is leaked to him. Conversely, this also works: In cases of failure signal of the sub jumps after a short waiting period alone in the standby mode and the eight-inch bass driver in his front gets a break.



Fine tuning: The V8 offers numerous options for sound shaping.

Slim boxes, thick carpet of sound

The subwoofer has also definitely deserved after our hearing test. We leave it initially comparatively things easy. For starters, we want to "5.1 System Movie" set the surround qualities to the test and do so with the re-live streaming of an NFL game. The Green Bay Packers are a guest at Arrowhead Stadium Kansas City Chiefs and submit a touchdown in his first drive. The limited technical requirements of the available audio track limit the scope of the M & K sets still pretty one, but the surround system indicates already what we can expect here. The two commentators and also the statements now and then uttered the Chief Judge be clearly reproduced by the Center. The atmosphere in the stadium must be behind it to back off a bit, but makes itself already well noticeable. Even the in-between on-screen and usually more marginal statistics of the two teams will be quite interesting by the background music and in this regard very active subwoofer.



The flat design of the K50-front speakers makes for a visually pleasant unobtrusive appearance.

In the positive steps but we do not want to leave it, so we set the listening test later with the Blu-ray "Sicario" section. Again, it concerns us once more to the atmospheric qualities. Plenty of food for offering the chapter with the trip to Juárez, which is extensively taken from the air. Thrilling music and the ever-increasing noise of the approaching helicopter immediately provides real cinema feeling. The subwoofer delivers V8 backing tracks here, adding it gradually through various details until the helicopter finally pushing thundering into view.

With patience for spectacle

But that's not enough, a short time later it comes to the famous scene at the border. Here, too, director Denis Villeneuve takes a lot of time, until the air stretched to breaking point. Sometimes a dog is as good as nothing to be heard except the barking, which, however, as natural sounds and the M & K sets that one suspects the barking quadrupeds right outside the door. Fortunately, this is not the case, because shortly thereafter breaks loose in its immediate vicinity a very short, but all the more violent inferno. The response team to Benicio del Toro and Jeffrey Donovan makes short work as usual.



The robust and gold-plated screw the "Movie 5.1 system" even take on banana plug.

Just in the surround system has other left to center field for all as a friendly question "¿Quiere morir?", Now it pops up on all channels. Fractions of a second before one of the gang members has answered the question unequivocally by a careless movement and immediately hitting balls the windows, doors and occupants of a red Impala. Although the M & K speakers are visually now moved by what has happened on the canvas completely into the background, they make themselves at this moment in vollster expression noticeable. The sound effects sound so vivid, you can actually distinguish between the virtual and real noise at the moment barely - an impressive and whether this clear separation at the same time very calming experience.

All at once, but a superb structure

Less threatening but all the more impressive it then proceeds to the final test run. Here we have once again opted for the first part of "John Wick" series, in which a pronounced downpour for a wonderful provides surround setting. The weather may have been not necessarily set the speaker considering its roots in the California sun in the cradle, but it now crackles audible around us down that it is a real pleasure. Impressive is primarily that of the omnipresent rain neither the soundtrack



urges the sidelines yet swallowed the scarce dialogues. As before, the Center does a great job here and makes us very well understand why Wick and his opponent just do not like good special. So much can be revealed: In bad weather it is not.



The surround setting of K40T looks very authentic and provides real cinema feeling.

Conclusion

The "Movie 5.1 system" of Miller & Kreisel supplies with minimum space requirements excellent home theater sound and is also priced very attractive. This makes it a real recommendation not only for beginners. In particular in its specialized field of film sound playback, the compact surround set plays big. Atmospheric scenes dominated the thrilling as well as fast-paced action scenes, always paired with a crystal-clear dialogue reproduction. In addition, thanks to the clear focus on the wall mounting very easy installation should ensure that Miller & Kreisel in the future not only in the film industry, but also in German home theater enjoys the long-deserved reputation.

Test & Text: Martin Sowa

Photos: Philipp Thielen



RATING

Overall score: 87/90

Class: upper class

price / performance: excellent

sound

87

practice

87

Equipment

87





Technical specifications

Model:	Miller & Kreisel Movie 5.1 system
Product Category:	5.1 surround set
Price:	1,500 €
versions:	- Black
Distribution:	Audio Reference, Hamburg Tel .: 040/53320359 www.audio-reference.de
Dimensions (HBT):	K50: 25 x 13 x 8.5 cm K40T: 19.5 x 20 x 12.2 cm V8: 34 x 26 x 29 cm
Weight:	K50: 2,0 kg K40T: 2.9 kg V8: 11 kg
Principle / construction:	closed
Frequency range:	K50: 100 - 20,000 Hz K40T: 100 - 20,000 Hz V8: 30 - 200 Hz (each manufacturer)
Crossover frequency:	K50: 1.8 Khz K40T: 2 kHz V8: 60 - 200 Hz (adjustable)
tweeter:	1-inch, silk (only K40T / K50)
Woofers:	4-inch, fiberglass (only K40T / K50)
woofer:	8 inches (only Subwoofer)



Model: Miller & Kreisel Movie 5.1 system

Subwoofer connections: 1x mono / stereo RCA in
1x stereo RCA out

Delivery:

- 3x LCR Speaker K50
- 2x surround speaker K40T
- 1 subwoofer V8
- Power cord
- wall brackets
- fixing material

Pro and con:

- + Plated terminal screws
- + suitable for banana plugs
- + integrated wall bracket including spacers.
- + Compact, living room-ready design
- + easy installation
- + excellent price-performance ratio
- + excellent surround sound playback

- only conditionally for installation on furniture suitable

rating:

Sound (60%): 87/90

Practice (20%): 87/90

Equipment (20%): 87/90

Final note: 87/90

Class: upper class

Price-performance outstanding