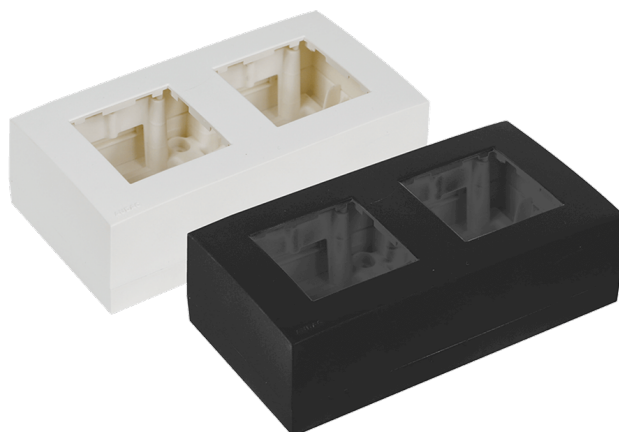




# WB45D

Surface mount box double 45 x 45 mm

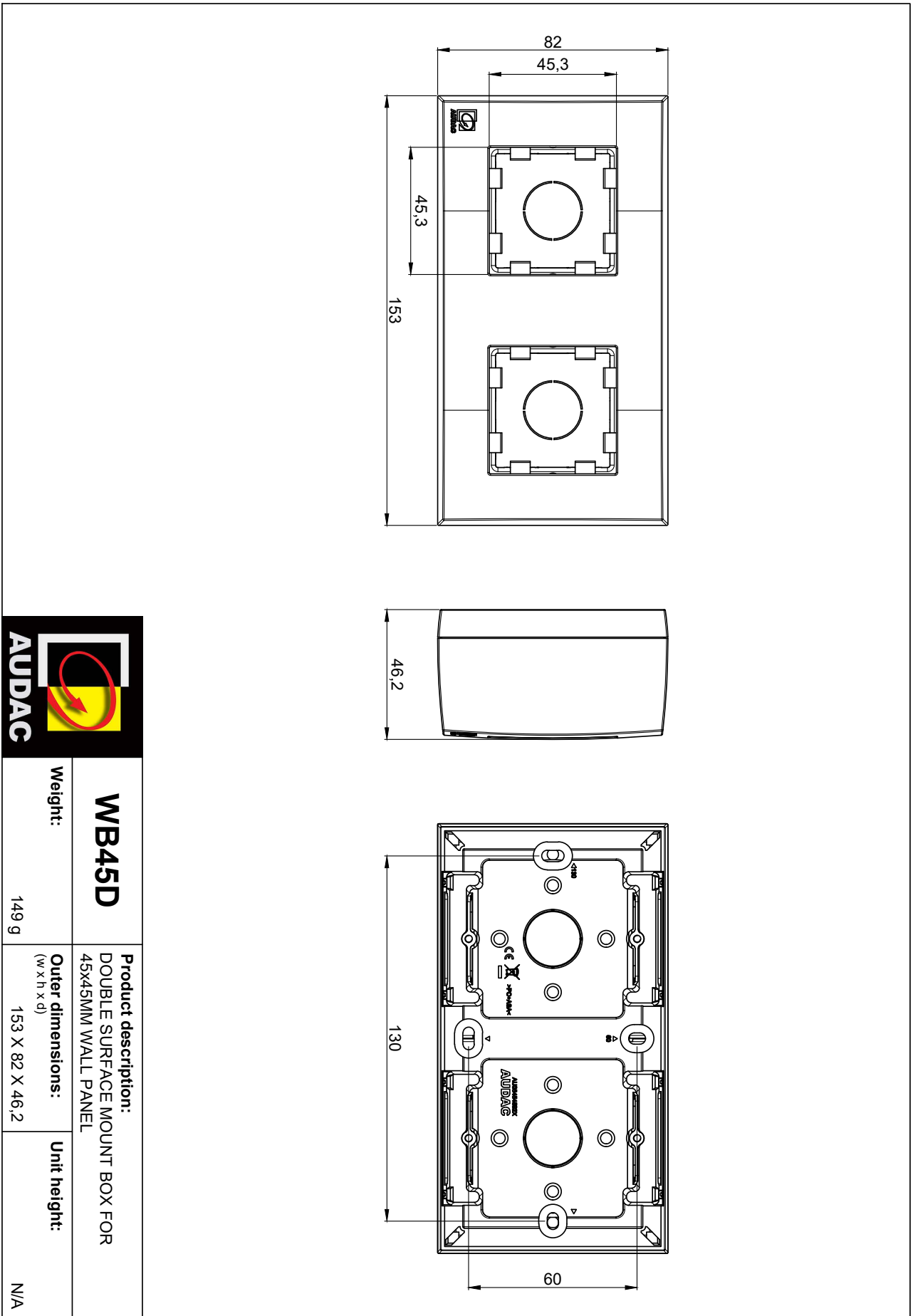
The WB45 wall boxes allow surface mount installation for any 45 x 45 mm standard sized product such as matrix control panels, volume controllers, connection plates, ...They come including a metal subframe(s) and are available in single (WB45S) and double (WB45D) unit size. They are available in black (/B) and white (/W)



## Variants:

---

- WB45D/W - White version
- WB45D/B - Black version



<b>WB45D</b>	<b>Product description:</b> DOUBLE SURFACE MOUNT BOX FOR 45x45MM WALL PANEL
<b>Weight:</b> 149 g	<b>Outer dimensions:</b> (w x h x d) 153 X 82 X 46,2
	<b>Unit height:</b> N/A