

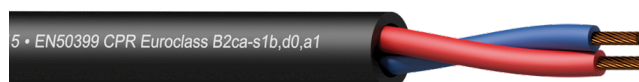
Highlights:

- EN50399 CPR Euroclass B2ca-s1b,d0,a1
- 16 AWG (1.5 mm²) thin and dense stranded conductors
- Class 5 IEC 60228 compliant

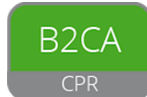
The CLS215-B2ca series are 2-core installation loudspeaker cables compliant to the B2ca standards of the Construction Product Regulation (CPR) regarding fire and flammability resistance in fixed installations, minimizing toxic smokes and providing optimal resistance to spreading fire. In addition to its outstanding fire properties, the outer jacket of the cabling is smooth and durable for easy installation and pulling.

The CLS2xx series consists of three models with individually polyolefin isolated conductors in sections ranging from 1.5 mm² (16 AWG) up to 4 mm² (11 AWG) which are composed of stranded bare copper wires. The stranding keeps the cable flexible and easy to handle. The cable can be used in both indoor and outdoor or in humid environments.

More information about CPR compliant cables? [Click here](#)



Certification:



Properties:



Inner Conductors:



Usage:



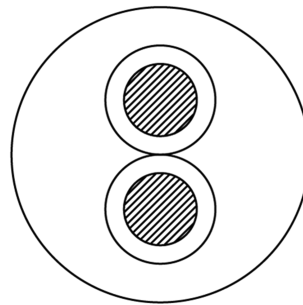
Physical Characteristics:

EN50399 CPR Euroclass		B2ca-s1b,d0,a1	
Inner conductor	Insulation	Material	Polyolefin 3.1 mm (Ø)
		Colours	Red / Blue
Outer jacket	Material	Polyolefin 9 mm (Ø)	
	Colours	Black	
Type of cable	2-core loudspeaker cable		
Inner conductor	Material	BC 28 x 0.25 mm (Ø) (OFC)	
	Section	1.5 mm ²	
Filling	None		
Separator	None		
Inner conductor	American Wire Gauge	16 AWG	
	Number of conductors	2	
	Conductor twisting	Yes	

Electrical Characteristics:

Max. conductor	DC resistance	13.3 (Ω / Km)
Dielectric strength	2 (KV / 1 min. DC)	
Rated voltage	500 V	

Cross sections:



Variants:

- CLS215-B2CA/1 - 100 m plastic reel
- CLS215-B2CA/3 - 300 m plastic reel