

## Double Arm Flat Screen Wall Mount with Tilt and Swivel

For more information please visit [www.btechavmounts.com/BT7515](http://www.btechavmounts.com/BT7515)

BT7515

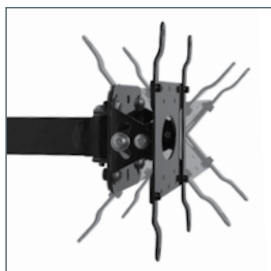
Registered Design Number: 000389994-0003



### BT7515 Double Arm Flat Screen Wall Mount with Tilt and Swivel

Designed for medium flat screens  
up to 42" (107cm) / 25kg (55lbs)

- Fits screens with VESA mounting patterns: 75 x 75mm, 100 x 100mm, 200 x 100mm and 200 x 200mm
- Easy tilt adjustment +/-40°
- Features three swivel points: 180° at wall, 360° at central pivot and 240° at interface
- **CLIPLOGIC™** cable management included
- Security locking screws and Allen key provided for secure installation
- Simple 'hook-on' installation with all mounting hardware included
- Available in Piano Black and Silver



Easy adjustment of tilt



CLIPLOGIC™ cable management



Space saving design - folds flat to the wall



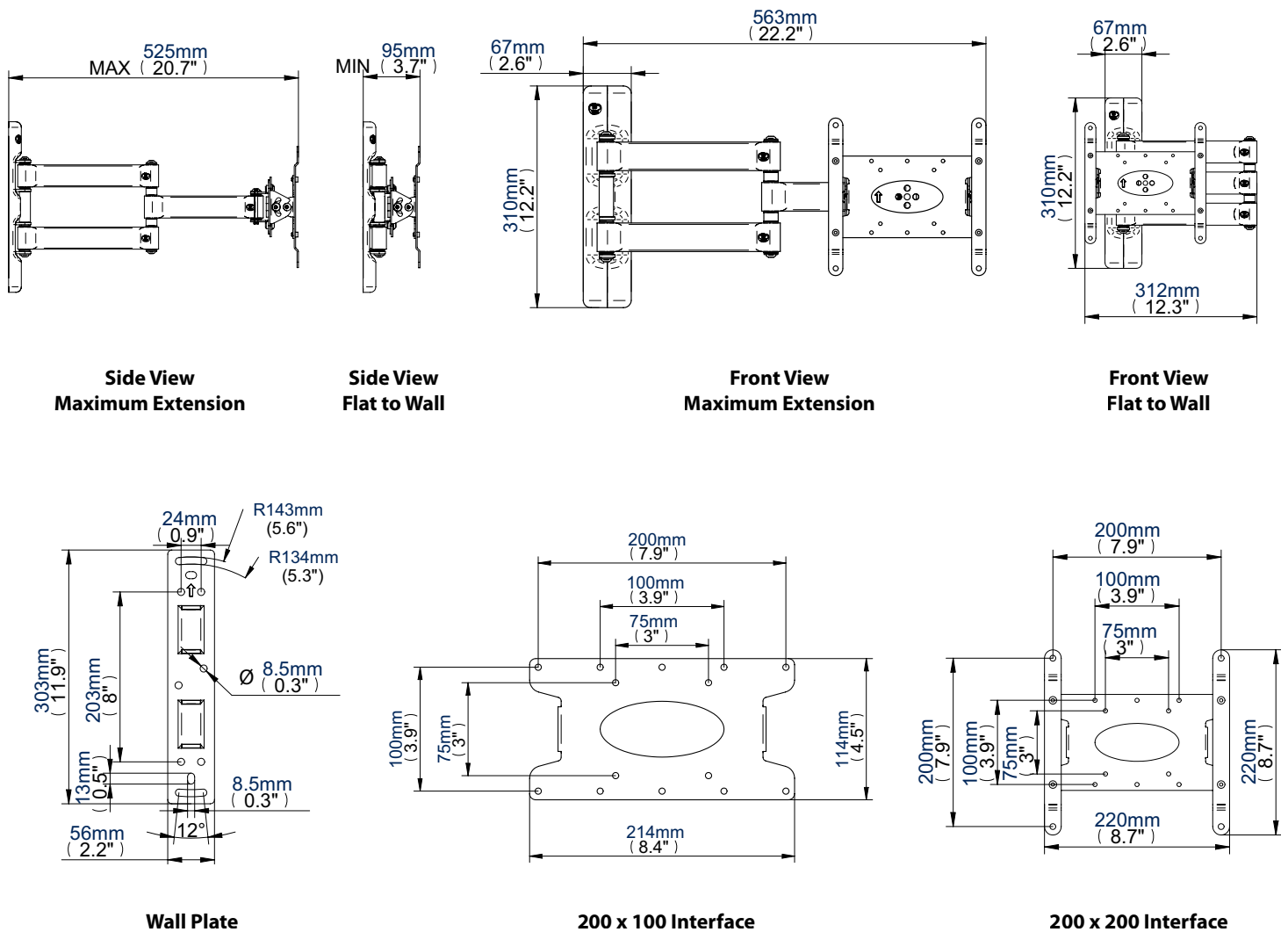
Security locking screws provided

### Double Arm Flat Screen Wall Mount with Tilt and Swivel

For more information please visit [www.btechavmounts.com/BT7515](http://www.btechavmounts.com/BT7515)

**BT7515**

Registered Design Number: 000389994-0003



| Colour:     | Order Ref: | EAN Code:     | Master Carton Qty: | Inner Carton Qty: | Master Carton Weight: | Master Carton Cube: |
|-------------|------------|---------------|--------------------|-------------------|-----------------------|---------------------|
| Piano Black | BT7515/PB  | 5019318750151 | 2                  | N/A               | 9.32kg (20.5lbs)      | 0.033cbm (1.15cuft) |
| Silver      | BT7515/S   | 5019318750168 | 2                  | N/A               | 9.32kg (20.5lbs)      | 0.033cbm (1.15cuft) |

**This information is intended as a guide only and reflects the current specification at the time of print.  
B-Tech accepts no liability for the accuracy of the information contained in this document.**