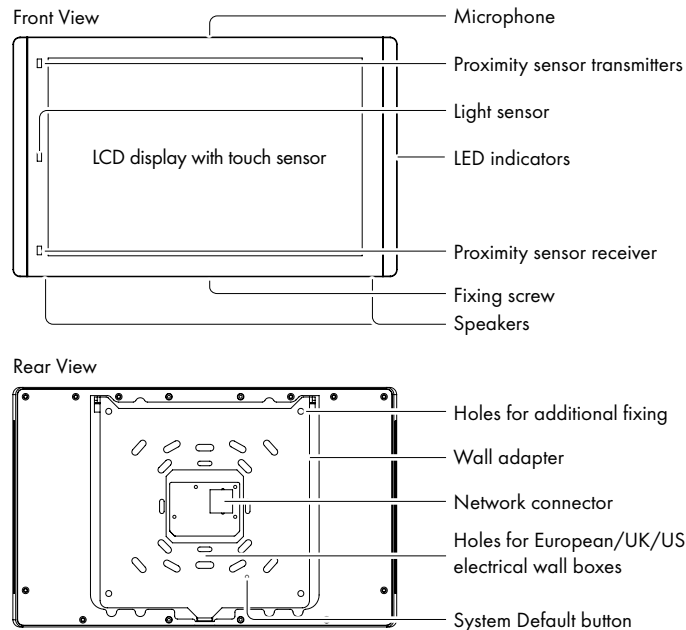


touchCUE-10-B

CS0560



Description

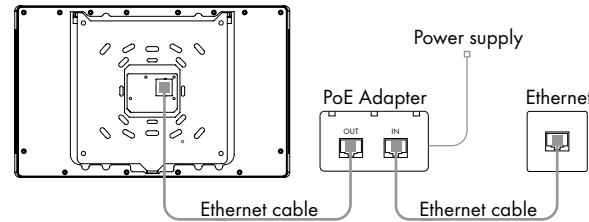


Box Contents

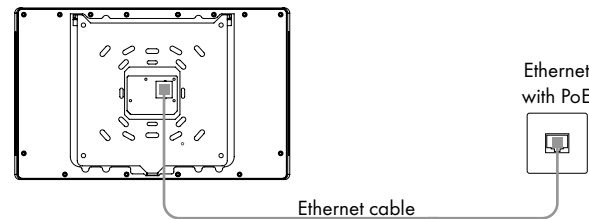
- Touch panel touchCUE-10-B
- Wall adapter incl. screws
- Fixing screw
- Cleaning tissue
- Ethernet cable
- Quick Start

Connection

Ethernet without PoE Infrastructure



Ethernet with PoE Infrastructure



System Default Setup

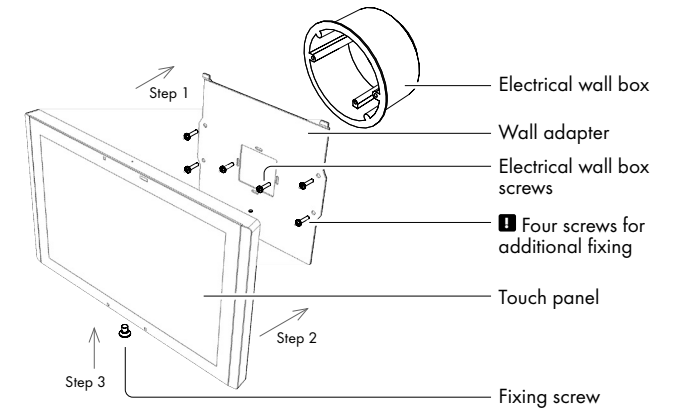
When System Default button is pressed longer than 5 sec., the system default function is performed and setup is as follows

- IP address: from DHCP (192.168.1.128 without DHCP)
- IP Mask: from DHCP (255.255.255.0 without DHCP)
- Password: Empty (no input required)

User Manual

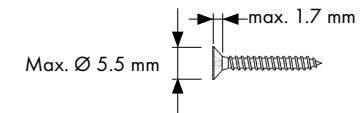
Complete user manual can be downloaded here:
http://www.cuesystem.com/user_manuals.aspx

Installation

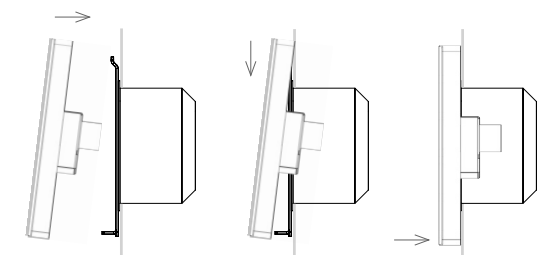


Installation steps are as follows

1. Install wall adapter on the electrical wall box and provide additional fixing by four delivered screws and fasteners.
 - Additional fixing is strictly recommended for this type of panel.
 - Use delivered screws or keep maximum screw dimensions as described below.



2. Connect network cable and put the touch panel on the wall adapter.



3. Carefully tighten the fixing screw to fix touch panel on the wall.